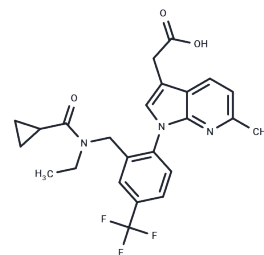


LAS191859

Chemical Properties

CAS No. : 1420071-13-1
 Formula: C₂₄H₂₄F₃N₃O₃
 Molecular Weight: 459.46
 Storage: Powder: -20°C for 3 years | In solvent: -80°C for 1 year
 Actual storage temperature shall be subject to the COA.



Biological Description

Description	LAS191859 is a CRTH2/DP2 antagonist with IC ₅₀ values of 7.6, 9.58, 14 and 15.5nM for recombinant guinea pig, human, rat and mouse CRTH2/DP2 receptors, respectively. LAS191859 has a residence time half-life of 21h at CRTh2 that translates into a long-lasting in vivo efficacy that is independent of plasma levels
Targets(IC ₅₀)	Others,Prostaglandin Receptor

Preparing Stock Solutions

	1mg	5mg	10mg
1 mM	2.1765 mL	10.8823 mL	21.7647 mL
5 mM	0.4353 mL	2.1765 mL	4.3529 mL
10 mM	0.2176 mL	1.0882 mL	2.1765 mL
50 mM	0.0435 mL	0.2176 mL	0.4353 mL

Please select the appropriate solvent to prepare the stock solution, according to the solubility of the product in different solvents. Please use it as soon as possible.

Note: The dilution table applies only to solid products. For liquid products, please calculate the stock solution based on the stated concentration and/or density.

Reference

Calbet M, Andrés M, Armengol C, Bravo M, Eichhorn P, López R, García-González V, Roberts R, Miralpeix M. Pharmacological characterization of CRTh2 antagonist LAS191859: Long receptor residence time translates into long-lasting in vivo efficacy. *Pharmacol Res.* 2016 Sep;111:208-216. doi: 10.1016/j.phrs.2016.06.014. Epub 2016 Jun 16. PubMed PMID: 27317944.

Inhibitor · Natural Compounds · Compound Libraries · Recombinant Proteins

This product is for Research Use Only · Not for Human or Veterinary or Therapeutic Use

Tel:781-999-4286 E_mail:info@targetmol.com Address:34 Washington Street,Wellesley Hills,MA 02481