

CR 665

## Chemical Properties

CAS No. : 228546-92-7

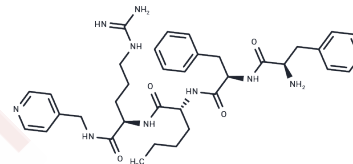
Formula: C<sub>36</sub>H<sub>49</sub>N<sub>9</sub>O<sub>4</sub>

Molecular Weight: 671.83

Keep away from moisture

Storage: Powder: -20°C for 3 years | In solvent: -80°C for 1 year

Actual storage temperature shall be subject to the COA.



## Biological Description

Description	CR 665 (JNJ 38488502) is a peripherally selective $\kappa$ -opioid agonist with an EC <sub>50</sub> of 10.9 nM for kappa opioid receptor activation, used in peripheral pain research.
Targets(IC <sub>50</sub> )	Opioid Receptor

## Preparing Stock Solutions

	1mg	5mg	10mg
1 mM	1.4885 mL	7.4424 mL	14.8847 mL
5 mM	0.2977 mL	1.4885 mL	2.9769 mL
10 mM	0.1488 mL	0.7442 mL	1.4885 mL
50 mM	0.0298 mL	0.1488 mL	0.2977 mL

Please select the appropriate solvent to prepare the stock solution, according to the solubility of the product in different solvents. Please use it as soon as possible.

Note: The dilution table applies only to solid products. For liquid products, please calculate the stock solution based on the stated concentration and/or density.

Inhibitor · Natural Compounds · Compound Libraries · Recombinant Proteins

This product is for Research Use Only · Not for Human or Veterinary or Therapeutic Use

Tel: 781-999-4286

E\_mail: info@targetmol.com

Address: 34 Washington Street, Wellesley Hills, MA 02481