

## Erasin

## Chemical Properties

CAS No. :

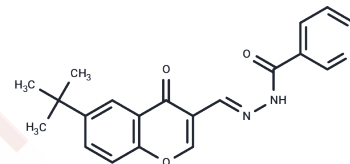
Formula: C<sub>20</sub>H<sub>19</sub>N<sub>3</sub>O<sub>3</sub>

Molecular Weight: 349.38

Store at low temperature

Storage: Powder: -20°C for 3 years | In solvent: -80°C for 1 year

Actual storage temperature shall be subject to the COA.



## Biological Description

Description	Erasin is a STAT3 inhibitor (IC <sub>50</sub> = 9.7 μM) with higher selectivity for inhibiting STAT3 tyrosine phosphorylation than STAT5 and STAT1. It induces apoptosis in various cancer cell lines (e.g., MDA-MB-231, HCC-827) and is effective against Erlotinib-resistant cancer cells.
Targets(IC50)	Apoptosis,STAT
In vitro	<p><b>Method:</b> HepG2 and K562 cells were treated with Erasin at concentrations of 0, 5, 10, 25, 50, and 100 μM for 24 hours, with a pre-incubation period of 1–2 hours. Following treatment, cells were stimulated with IL-6 (to activate STAT3) or IFN-γ (to activate STAT1), and tyrosine phosphorylation levels of STAT proteins were assessed.</p> <p><b>Result:</b> Erasin inhibited IL-6-induced phosphorylation of STAT3 at Tyr705 in HepG2 cells in a dose-dependent manner. It also inhibited IFN-γ-induced phosphorylation of STAT1 at Tyr701 to a lesser extent. Tyrosine phosphorylation of STAT5 in K562 cells was not inhibited.[1]</p>

## Solubility Information

Solubility	DMSO: 30 mg/mL (85.87 mM),Sonication is recommended. (< 1 mg/ml refers to the product slightly soluble or insoluble)
In vivo Formulation	10% DMSO+40% PEG300+5% Tween 80+45% Saline: 2 mg/mL (5.72 mM),Sonication is recommended. <i>Please add the solvents sequentially, clarifying the solution as much as possible before adding the next one. Dissolve by heating and/or sonication if necessary. Working solution is recommended to be prepared and used immediately. The formulation provided above is for reference purposes only. In vivo formulations may vary and should be modified based on specific experimental conditions.</i>

### Preparing Stock Solutions

---

	<b>1mg</b>	<b>5mg</b>	<b>10mg</b>
1 mM	2.8622 mL	14.3111 mL	28.6221 mL
5 mM	0.5724 mL	2.8622 mL	5.7244 mL
10 mM	0.2862 mL	1.4311 mL	2.8622 mL
50 mM	0.0572 mL	0.2862 mL	0.5724 mL

---

Please select the appropriate solvent to prepare the stock solution, according to the solubility of the product in different solvents. Please use it as soon as possible.

Note: The dilution table applies only to solid products. For liquid products, please calculate the stock solution based on the stated concentration and/or density.

### Reference

Lis C, et al. Development of Erasin: a chromone-based STAT3 inhibitor which induces apoptosis in Erlotinib-resistant lung cancer cells. Sci Rep. 2017 Dec 12;7(1):17390.

**Inhibitor · Natural Compounds · Compound Libraries · Recombinant Proteins**

This product is for Research Use Only · Not for Human or Veterinary or Therapeutic Use

Tel:781-999-4286 E\_mail:info@targetmol.com Address:34 Washington Street,Wellesley Hills,MA 02481