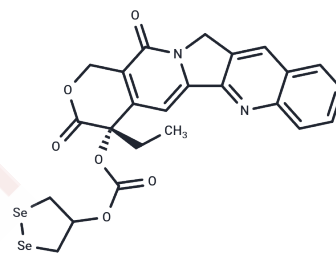


CPT-Se3

Chemical Properties

CAS No. :	2968315-02-6
Formula:	C ₂₄ H ₂₀ N ₂ O ₆ Se ₂
Molecular Weight:	590.35
Storage:	Powder: -20°C for 3 years In solvent: -80°C for 1 year Actual storage temperature shall be subject to the COA.



Biological Description

Description	CPT-Se3, a camptothecin (CPT) seleno-derivative, exhibits enhanced anticancer efficacy by effectively killing cancer cells and hindering tumor proliferation. This compound diminishes the GSH/GSSG ratio and total thiols while increasing ROS levels, ultimately triggering apoptosis in Hep G2 cells. Furthermore, CPT-Se3 demonstrates significant cytotoxicity against HeLa, Hep G2, A549, and SMMC-7721 cell lines with IC ₅₀ values ranging from 2.19 to 4.7 μM [1].
Targets(IC ₅₀)	Apoptosis, Topoisomerase

Preparing Stock Solutions

	1mg	5mg	10mg
1 mM	1.6939 mL	8.4696 mL	16.9391 mL
5 mM	0.3388 mL	1.6939 mL	3.3878 mL
10 mM	0.1694 mL	0.847 mL	1.6939 mL
50 mM	0.0339 mL	0.1694 mL	0.3388 mL

Please select the appropriate solvent to prepare the stock solution, according to the solubility of the product in different solvents. Please use it as soon as possible.

Note: The dilution table applies only to solid products. For liquid products, please calculate the stock solution based on the stated concentration and/or density.

Inhibitor · Natural Compounds · Compound Libraries · Recombinant Proteins

This product is for Research Use Only · Not for Human or Veterinary or Therapeutic Use

Tel: 781-999-4286 E_mail: info@targetmol.com Address: 34 Washington Street, Wellesley Hills, MA 02481