

(-)SHIN2

Chemical Properties

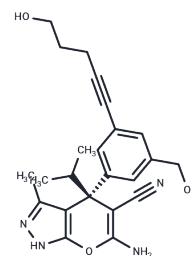
CAS No. :

Formula: C₂₃H₂₆N₄O₃

Molecular Weight: 406.48

Storage: Powder: -20°C for 3 years | In solvent: -80°C for 1 year

Actual storage temperature shall be subject to the COA.



Biological Description

Description	(+)SHIN2, an isomer of (-)SHIN2, is an inhibitor of serine hydroxymethyltransferase (SHMT) with antileukemic effects and shows synergistic activity with Methotrexate in in vivo xenotransplantation models [1].
Targets(IC50)	Others

Preparing Stock Solutions

	1mg	5mg	10mg
1 mM	2.4601 mL	12.3007 mL	24.6015 mL
5 mM	0.492 mL	2.4601 mL	4.9203 mL
10 mM	0.246 mL	1.2301 mL	2.4601 mL
50 mM	0.0492 mL	0.246 mL	0.492 mL

Please select the appropriate solvent to prepare the stock solution, according to the solubility of the product in different solvents. Please use it as soon as possible.

Note: The dilution table applies only to solid products. For liquid products, please calculate the stock solution based on the stated concentration and/or density.

Inhibitor · Natural Compounds · Compound Libraries · Recombinant Proteins

This product is for Research Use Only · Not for Human or Veterinary or Therapeutic Use

Tel:781-999-4286

E_mail:info@targetmol.com

Address:34 Washington Street,Wellesley Hills,MA 02481