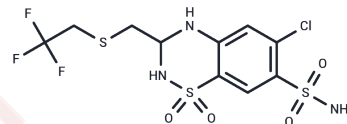


Epitizide

Chemical Properties

| | |
|-------------------|---|
| CAS No. : | 1764-85-8 |
| Formula: | C ₁₀ H ₁₁ ClF ₃ N ₃ O ₄ S ₃ |
| Molecular Weight: | 425.86 |
| Storage: | Powder: -20°C for 3 years In solvent: -80°C for 1 year Actual storage temperature shall be subject to the COA. |



Biological Description

| | |
|---------------|---|
| Description | Epitizide, a benzothiadiazine, is commonly used in combination with Triamterene to induce diuresis [1]. |
| Targets(IC50) | Others |

Preparing Stock Solutions

| | 1mg | 5mg | 10mg |
|-------|-----------|------------|------------|
| 1 mM | 2.3482 mL | 11.7409 mL | 23.4819 mL |
| 5 mM | 0.4696 mL | 2.3482 mL | 4.6964 mL |
| 10 mM | 0.2348 mL | 1.1741 mL | 2.3482 mL |
| 50 mM | 0.047 mL | 0.2348 mL | 0.4696 mL |

Please select the appropriate solvent to prepare the stock solution, according to the solubility of the product in different solvents. Please use it as soon as possible.

Note: The dilution table applies only to solid products. For liquid products, please calculate the stock solution based on the stated concentration and/or density.

Inhibitor · Natural Compounds · Compound Libraries · Recombinant Proteins

This product is for Research Use Only · Not for Human or Veterinary or Therapeutic Use

Tel: 781-999-4286 E_mail: info@targetmol.com Address: 34 Washington Street, Wellesley Hills, MA 02481