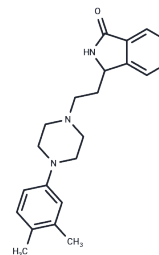


PD 168568

## Chemical Properties

CAS No. : 210688-56-5  
 Formula: C<sub>22</sub>H<sub>27</sub>N<sub>3</sub>O  
 Molecular Weight: 349.47  
 Storage: Powder: -20°C for 3 years | In solvent: -80°C for 1 year  
 Actual storage temperature shall be subject to the COA.



## Biological Description

Description	PD 168568, an orally active and potent dopamine receptor D4 (DRD4) antagonist featuring an isoindolinone structure, demonstrates selective affinity for the D4 receptor over D2 and D3 receptors, with K <sub>i</sub> values of 8.8, 1842, and 2682 nM, respectively. This compound is utilized in glioblastoma (GBM) research.
Targets(IC50)	Others,Dopamine Receptor

## Preparing Stock Solutions

	1mg	5mg	10mg
1 mM	2.8615 mL	14.3074 mL	28.6148 mL
5 mM	0.5723 mL	2.8615 mL	5.723 mL
10 mM	0.2861 mL	1.4307 mL	2.8615 mL
50 mM	0.0572 mL	0.2861 mL	0.5723 mL

Please select the appropriate solvent to prepare the stock solution, according to the solubility of the product in different solvents. Please use it as soon as possible.

Note: The dilution table applies only to solid products. For liquid products, please calculate the stock solution based on the stated concentration and/or density.

Inhibitor · Natural Compounds · Compound Libraries · Recombinant Proteins

This product is for Research Use Only · Not for Human or Veterinary or Therapeutic Use

Tel:781-999-4286 E\_mail:info@targetmol.com Address:34 Washington Street,Wellesley Hills,MA 02481