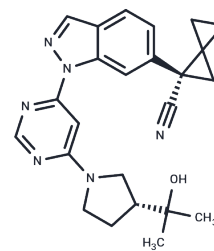


LRRK2-IN-7

Chemical Properties

CAS No. :	2307277-93-4
Formula:	C ₂₄ H ₂₆ N ₆ O
Molecular Weight:	414.5
Storage:	Powder: -20°C for 3 years In solvent: -80°C for 1 year Actual storage temperature shall be subject to the COA.



Biological Description

Description	LRRK2-IN-7 is a selective, CNS permeable and potent LRRK2 kinase inhibitor (IC ₅₀ : 0.9 nM) for the study of Parkinson's disease.
Targets(IC ₅₀)	LRRK2

Solubility Information

Solubility	DMSO: 80 mg/mL (193 mM), Sonication is recommended. (< 1 mg/ml refers to the product slightly soluble or insoluble)
In vivo Formulation	10% DMSO+40% PEG300+5% Tween 80+45% Saline: 3.3 mg/mL (7.96 mM), Sonication is recommended. <i>Please add the solvents sequentially, clarifying the solution as much as possible before adding the next one. Dissolve by heating and/or sonication if necessary. Working solution is recommended to be prepared and used immediately. The formulation provided above is for reference purposes only. In vivo formulations may vary and should be modified based on specific experimental conditions.</i>

Preparing Stock Solutions

	1mg	5mg	10mg
1 mM	2.4125 mL	12.0627 mL	24.1255 mL
5 mM	0.4825 mL	2.4125 mL	4.8251 mL
10 mM	0.2413 mL	1.2063 mL	2.4125 mL
50 mM	0.0483 mL	0.2413 mL	0.4825 mL

Please select the appropriate solvent to prepare the stock solution, according to the solubility of the product in different solvents. Please use it as soon as possible.

Note: The dilution table applies only to solid products. For liquid products, please calculate the stock solution based on the stated concentration and/or density.

Reference

David A Candito, et al. Discovery and Optimization of Potent, Selective, and Brain-Penetrant 1-Heteroaryl-1 H-Indazole LRRK2 Kinase Inhibitors for the Treatment of Parkinson's Disease. J Med Chem. 2022 Dec 22;65(24):16801-16817.

Inhibitor · Natural Compounds · Compound Libraries · Recombinant Proteins

This product is for Research Use Only· Not for Human or Veterinary or Therapeutic Use

Tel:781-999-4286 E_mail:info@targetmol.com Address:34 Washington Street,Wellesley Hills,MA 02481