

ONO-0740556

Chemical Properties

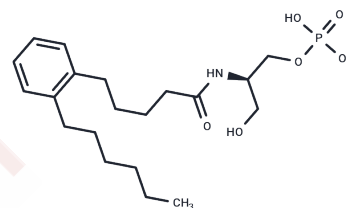
CAS No. : 2250210-69-4

Formula: C₂₀H₃₄N₂O₆P

Molecular Weight: 415.46

Storage: Powder: -20°C for 3 years | In solvent: -80°C for 1 year

Actual storage temperature shall be subject to the COA.



Biological Description

Description	ONO-0740556 is a potent agonist of the Gi-coupled human lysophosphatidic acid receptor 1 (LPA1), exhibiting an EC ₅₀ value of 0.26 nM.
Targets(IC50)	Others,LPL Receptor

Preparing Stock Solutions

	1mg	5mg	10mg
1 mM	2.407 mL	12.0349 mL	24.0697 mL
5 mM	0.4814 mL	2.407 mL	4.8139 mL
10 mM	0.2407 mL	1.2035 mL	2.407 mL
50 mM	0.0481 mL	0.2407 mL	0.4814 mL

Please select the appropriate solvent to prepare the stock solution, according to the solubility of the product in different solvents. Please use it as soon as possible.

Note: The dilution table applies only to solid products. For liquid products, please calculate the stock solution based on the stated concentration and/or density.

Inhibitor · Natural Compounds · Compound Libraries · Recombinant Proteins

This product is for Research Use Only· Not for Human or Veterinary or Therapeutic Use

Tel:781-999-4286 E_mail:info@targetmol.com Address:34 Washington Street,Wellesley Hills,MA 02481