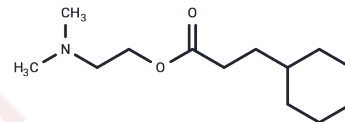


Cyprodenate

Chemical Properties

CAS No. :	15585-86-1
Formula:	C ₁₃ H ₂₅ NO ₂
Molecular Weight:	227.34
Storage:	Powder: -20°C for 3 years In solvent: -80°C for 1 year Actual storage temperature shall be subject to the COA.



Biological Description

Description	Cyprodenate (Actebral) is a potent oral heart stimulant and brain activator, also acting as an appetite suppressant, useful for research into metabolic and cardiovascular diseases.
Targets(IC50)	Others,GABA Receptor

Solubility Information

Solubility	DMSO: 160 mg/mL (703.79 mM),Sonication is recommended. (< 1 mg/ml refers to the product slightly soluble or insoluble)
In vivo Formulation	10% DMSO+40% PEG300+5% Tween 80+45% Saline: 5 mg/mL (21.99 mM),Sonication is recommended. <i>Please add the solvents sequentially, clarifying the solution as much as possible before adding the next one. Dissolve by heating and/or sonication if necessary. Working solution is recommended to be prepared and used immediately. The formulation provided above is for reference purposes only. In vivo formulations may vary and should be modified based on specific experimental conditions.</i>

Preparing Stock Solutions

	1mg	5mg	10mg
1 mM	4.3987 mL	21.9935 mL	43.987 mL
5 mM	0.8797 mL	4.3987 mL	8.7974 mL
10 mM	0.4399 mL	2.1993 mL	4.3987 mL
50 mM	0.088 mL	0.4399 mL	0.8797 mL

Please select the appropriate solvent to prepare the stock solution, according to the solubility of the product in different solvents. Please use it as soon as possible.

Note: The dilution table applies only to solid products. For liquid products, please calculate the stock solution based on the stated concentration and/or density.

Reference

Dormard, Y et al. pharmacokinetic study of maleate acid of 2-(N,N-dimethylaminoethanol-14C1)-cyclohexylpropionate (cyprodenate) and of N,N-dimethylaminoethanol-14C1 in animals. Arzneimittel-Forschung vol. 25,2 (1975): 201-7.

Inhibitor · Natural Compounds · Compound Libraries · Recombinant Proteins

This product is for Research Use Only · Not for Human or Veterinary or Therapeutic Use

Tel:781-999-4286 E_mail:info@targetmol.com Address:34 Washington Street,Wellesley Hills,MA 02481