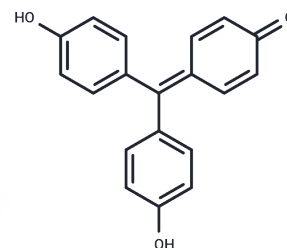


## Rosolic Acid

## Chemical Properties

|                   |   |
|-------------------|---|
| CAS No. :         | 603-45-2  |
| Formula:          | C <sub>19</sub> H <sub>14</sub> O <sub>3</sub>  |
| Molecular Weight: | 290.31  |
| Storage:          | Powder: -20°C for 3 years   In solvent: -80°C for 1 year<br>Actual storage temperature shall be subject to the COA. |



## Biological Description

|               |  |
|---------------|--|
| Description   | Rosolic Acid serves as an Nrf2 activator and influences its downstream targets, enhancing angiogenic factor levels while reducing inflammation (TNF- $\alpha$ and IL-1 $\beta$ ) and apoptotic markers (CXCL10 and CCL2). This compound not only facilitates the restoration of pancreatic cell function but also shields endothelial cells (ECs) from endoplasmic reticulum stress. |
| Targets(IC50) | Others,Nrf2  |

## Preparing Stock Solutions

|       | 1mg       | 5mg       | 10mg       |
|-------|-----------|-----------|------------|
| 1 mM  | 3.4446 mL | 17.223 mL | 34.4459 mL |
| 5 mM  | 0.6889 mL | 3.4446 mL | 6.8892 mL  |
| 10 mM | 0.3445 mL | 1.7223 mL | 3.4446 mL  |
| 50 mM | 0.0689 mL | 0.3445 mL | 0.6889 mL  |

Please select the appropriate solvent to prepare the stock solution, according to the solubility of the product in different solvents. Please use it as soon as possible.

Note: The dilution table applies only to solid products. For liquid products, please calculate the stock solution based on the stated concentration and/or density.

Inhibitor · Natural Compounds · Compound Libraries · Recombinant Proteins

This product is for Research Use Only · Not for Human or Veterinary or Therapeutic Use

Tel:781-999-4286 E\_mail:info@targetmol.com Address:34 Washington Street,Wellesley Hills,MA 02481