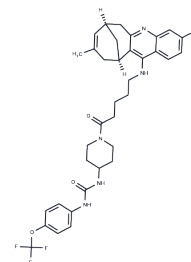


sEH/AChE-IN-4

Chemical Properties

CAS No. : 2490589-12-1
 Formula: C₃₅H₃₉ClF₃N₅O₃
 Molecular Weight: 670.16
 Storage: Powder: -20°C for 3 years | In solvent: -80°C for 1 year
 Actual storage temperature shall be subject to the COA.



Biological Description

Description	sEH/AChE-IN-4 -15 is a potent, blood-brain barrier-penetrating dual inhibitor targeting soluble epoxide hydrolase (sEH) and acetylcholinesterase (AChE). It demonstrates notable inhibition efficacy, with IC ₅₀ values of 3.1 nM (hsEH), 1660 nM (hAChE), 179 nM (hBChE, human butyrylcholinesterase), 14.5 nM (msEH), and 102 nM (mAChE), indicating its significant inhibitory action across both targeted enzymes in human and mouse models.
Targets(IC ₅₀)	Others, Epoxide Hydrolase, Cholinesterase (ChE)

Preparing Stock Solutions

	1mg	5mg	10mg
1 mM	1.4922 mL	7.4609 mL	14.9218 mL
5 mM	0.2984 mL	1.4922 mL	2.9844 mL
10 mM	0.1492 mL	0.7461 mL	1.4922 mL
50 mM	0.0298 mL	0.1492 mL	0.2984 mL

Please select the appropriate solvent to prepare the stock solution, according to the solubility of the product in different solvents. Please use it as soon as possible.

Note: The dilution table applies only to solid products. For liquid products, please calculate the stock solution based on the stated concentration and/or density.

Inhibitor · Natural Compounds · Compound Libraries · Recombinant Proteins

This product is for Research Use Only · Not for Human or Veterinary or Therapeutic Use

Tel: 781-999-4286 E_mail: info@targetmol.com Address: 34 Washington Street, Wellesley Hills, MA 02481