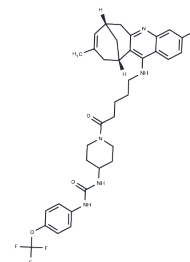


sEH/AChE-IN-3

Chemical Properties

CAS No. : 2490589-11-0
 Formula: C₃₅H₃₉ClF₃N₅O₃
 Molecular Weight: 670.16
 Storage: Powder: -20°C for 3 years | In solvent: -80°C for 1 year
 Actual storage temperature shall be subject to the COA.



Biological Description

| | |
|----------------------------|--|
| Description | sEH/AChE-IN-3 (15) serves as a dual inhibitor targeting both soluble epoxide hydrolase (sEH) and acetylcholinesterase (AChE), demonstrating potent activity and the ability to cross the blood-brain barrier (BBB). It exhibits IC ₅₀ values of 0.4 nM for human sEH (hsEH), 1.94 nM for human AChE (hAChE), 615 nM for human butyrylcholinesterase (hBChE), 4.3 nM for mouse sEH (msEH), and 2.61 nM for mouse AChE (mAChE), indicating its efficacy across these enzymes. |
| Targets(IC ₅₀) | Others, Epoxide Hydrolase, Cholinesterase (ChE) |

Preparing Stock Solutions

| | 1mg | 5mg | 10mg |
|-------|-----------|-----------|------------|
| 1 mM | 1.4922 mL | 7.4609 mL | 14.9218 mL |
| 5 mM | 0.2984 mL | 1.4922 mL | 2.9844 mL |
| 10 mM | 0.1492 mL | 0.7461 mL | 1.4922 mL |
| 50 mM | 0.0298 mL | 0.1492 mL | 0.2984 mL |

Please select the appropriate solvent to prepare the stock solution, according to the solubility of the product in different solvents. Please use it as soon as possible.

Note: The dilution table applies only to solid products. For liquid products, please calculate the stock solution based on the stated concentration and/or density.

Inhibitor · Natural Compounds · Compound Libraries · Recombinant Proteins

This product is for Research Use Only · Not for Human or Veterinary or Therapeutic Use

Tel: 781-999-4286 E_mail: info@targetmol.com Address: 34 Washington Street, Wellesley Hills, MA 02481