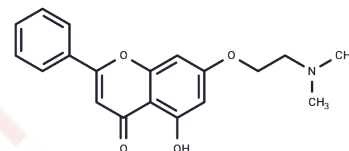


AChE/BuChE-IN-1

Chemical Properties

CAS No. :	84212-49-7
Formula:	C ₁₉ H ₁₉ NO ₄
Molecular Weight:	325.36
Storage:	Powder: -20°C for 3 years In solvent: -80°C for 1 year Actual storage temperature shall be subject to the COA.



Biological Description

Description	AChE/BuChE-IN-1, a selective butyrylcholinesterase (BuChE) inhibitor derived from chrysin, exhibits a potent efficacy with an IC ₅₀ of 0.48 μM against BuChE and a lesser inhibitory effect on acetylcholinesterase (AChE) with an IC ₅₀ of 7.16 μM. It demonstrates significant hydroxyl radical (\cdot OH) scavenging activity, achieving an IC ₅₀ of 0.1674 μM, and effectively inhibits reactive oxygen species (ROS) and Aβ 1-42 aggregation, including self-aggregation, copper (Cu 2+)-induced, and AChE-induced aggregation. Characterized by high blood-brain barrier (BBB) permeability, bioavailability, and low cellular toxicity, AChE/BuChE-IN-1 holds promising potential for Alzheimer's disease (AD) research.
Targets(IC50)	Others,Cholinesterase (ChE)

Preparing Stock Solutions

	1mg	5mg	10mg
1 mM	3.0735 mL	15.3676 mL	30.7352 mL
5 mM	0.6147 mL	3.0735 mL	6.147 mL
10 mM	0.3074 mL	1.5368 mL	3.0735 mL
50 mM	0.0615 mL	0.3074 mL	0.6147 mL

Please select the appropriate solvent to prepare the stock solution, according to the solubility of the product in different solvents. Please use it as soon as possible.

Note: The dilution table applies only to solid products. For liquid products, please calculate the stock solution based on the stated concentration and/or density.

Inhibitor · Natural Compounds · Compound Libraries · Recombinant Proteins

This product is for Research Use Only · Not for Human or Veterinary or Therapeutic Use

Tel:781-999-4286 E_mail:info@targetmol.com Address:34 Washington Street,Wellesley Hills,MA 02481