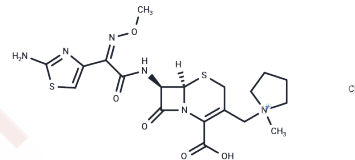


## Cefepime chloride

## Chemical Properties

CAS No. :	107648-79-3
Formula:	C <sub>19</sub> H <sub>25</sub> ClN <sub>6</sub> O <sub>5</sub> S <sub>2</sub>
Molecular Weight:	517.02
Storage:	Powder: -20°C for 3 years   In solvent: -80°C for 1 year Actual storage temperature shall be subject to the COA.



## Biological Description

Description	Cefepime chloride (BMV-28142) is a broad-spectrum cephalosporin that can cross the blood-brain barrier and exhibits antibacterial activity against both Gram-positive and Gram-negative aerobic bacteria. It also induces neurotoxicity.
Targets(IC50)	Others,Antibacterial,Antibiotic

## Preparing Stock Solutions

	1mg	5mg	10mg
1 mM	1.9342 mL	9.6708 mL	19.3416 mL
5 mM	0.3868 mL	1.9342 mL	3.8683 mL
10 mM	0.1934 mL	0.9671 mL	1.9342 mL
50 mM	0.0387 mL	0.1934 mL	0.3868 mL

Please select the appropriate solvent to prepare the stock solution, according to the solubility of the product in different solvents. Please use it as soon as possible.

Note: The dilution table applies only to solid products. For liquid products, please calculate the stock solution based on the stated concentration and/or density.

Inhibitor · Natural Compounds · Compound Libraries · Recombinant Proteins

This product is for Research Use Only · Not for Human or Veterinary or Therapeutic Use

Tel:781-999-4286 E\_mail:info@targetmol.com Address:34 Washington Street,Wellesley Hills,MA 02481