

## Cathepsin L/S-IN-1

## Chemical Properties

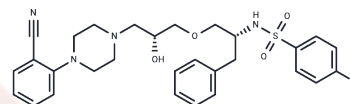
CAS No. :

Formula: C29H33BrN4O4S

Molecular Weight: 613.57

Storage: Powder: -20°C for 3 years | In solvent: -80°C for 1 year

Actual storage temperature shall be subject to the COA.



## Biological Description

Description	Cathepsin L/S-IN-1, a dual inhibitor targeting Cathepsin L and Cathepsin S, exhibits potent and selective inhibition with IC50 values of 4.10 $\mu$ M and 1.79 $\mu$ M, respectively. Demonstrating significant antimetastatic and invasive effects, it effectively impacts pancreatic cancer BxPC-3 and PANC-1 cells.
Targets(IC50)	Others,Cysteine Protease

## Preparing Stock Solutions

	1mg	5mg	10mg
1 mM	1.6298 mL	8.149 mL	16.2981 mL
5 mM	0.326 mL	1.6298 mL	3.2596 mL
10 mM	0.163 mL	0.8149 mL	1.6298 mL
50 mM	0.0326 mL	0.163 mL	0.326 mL

Please select the appropriate solvent to prepare the stock solution, according to the solubility of the product in different solvents. Please use it as soon as possible.

Note: The dilution table applies only to solid products. For liquid products, please calculate the stock solution based on the stated concentration and/or density.

Inhibitor · Natural Compounds · Compound Libraries · Recombinant Proteins

This product is for Research Use Only · Not for Human or Veterinary or Therapeutic Use

Tel:781-999-4286

E\_mail:info@targetmol.com

Address:34 Washington Street,Wellesley Hills,MA 02481