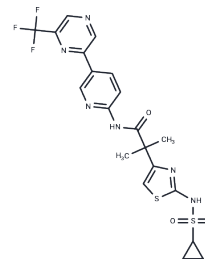


## CTP Synthetase-IN-1

## Chemical Properties

CAS No. :	2338811-71-3
Formula:	C <sub>20</sub> H <sub>19</sub> F <sub>3</sub> N <sub>6</sub> O <sub>3</sub> S <sub>2</sub>
Molecular Weight:	512.53
Storage:	Powder: -20°C for 3 years   In solvent: -80°C for 1 year Actual storage temperature shall be subject to the COA.



## Biological Description

Description	CTP Synthetase-IN-1 is an orally active and potent cytidine 5'-triphosphate synthetase (CTPS) inhibitor with potential antitumour activity, shows anti-inflammatory activity in animal models of inflammation, inhibits human CTPS1 and human CTPS2, and can be used in studies of arthritis and rheumatoid arthritis.
Targets(IC50)	Others,DNA/RNA Synthesis
In vivo	In the Mouse collagen-induced arthritis (CIA) model, CTP Synthetase-IN-1 (10 mg/kg, p. o; twice daily; for 18 days) exhibited significant pharmacological responses[1].

## Solubility Information

Solubility	DMSO: 80 mg/mL (156.09 mM),Sonication is recommended. (< 1 mg/ml refers to the product slightly soluble or insoluble)
------------	--

## Preparing Stock Solutions

	1mg	5mg	10mg
1 mM	1.9511 mL	9.7555 mL	19.5111 mL
5 mM	0.3902 mL	1.9511 mL	3.9022 mL
10 mM	0.1951 mL	0.9756 mL	1.9511 mL
50 mM	0.039 mL	0.1951 mL	0.3902 mL

Please select the appropriate solvent to prepare the stock solution, according to the solubility of the product in different solvents. Please use it as soon as possible.

Note: The dilution table applies only to solid products. For liquid products, please calculate the stock solution based on the stated concentration and/or density.

Reference

Andrew Novak, et al. Discovery and Optimization of Potent and Orally Available CTP Synthetase Inhibitors for Use in Treatment of Diseases Driven by Aberrant Immune Cell Proliferation. J Med Chem. 2022 Dec 22;65(24):16640-16650.

**Inhibitor · Natural Compounds · Compound Libraries · Recombinant Proteins**

This product is for Research Use Only · Not for Human or Veterinary or Therapeutic Use

Tel:781-999-4286 E\_mail:info@targetmol.com Address:34 Washington Street,Wellesley Hills,MA 02481