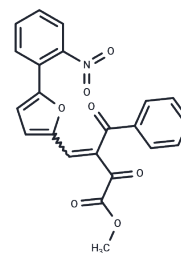


## SARS-CoV-2 3CLpro-IN-6

## Chemical Properties

CAS No. :	302821-53-0
Formula:	C <sub>22</sub> H <sub>15</sub> N <sub>3</sub> O <sub>7</sub>
Molecular Weight:	405.36
Storage:	Powder: -20°C for 3 years   In solvent: -80°C for 1 year Actual storage temperature shall be subject to the COA.



## Biological Description

Description	SARS-CoV-2 3CLpro-IN-6 is a reversible covalent inhibitor of the SARS-CoV-2 3CL protease, showing potent inhibitory activity with an IC <sub>50</sub> of 4.9 μM, and is used in the research of coronavirus disease 2019 (COVID-19).
Targets(IC <sub>50</sub> )	Others,SARS-CoV

## Preparing Stock Solutions

	1mg	5mg	10mg
1 mM	2.4669 mL	12.3347 mL	24.6694 mL
5 mM	0.4934 mL	2.4669 mL	4.9339 mL
10 mM	0.2467 mL	1.2335 mL	2.4669 mL
50 mM	0.0493 mL	0.2467 mL	0.4934 mL

Please select the appropriate solvent to prepare the stock solution, according to the solubility of the product in different solvents. Please use it as soon as possible.

Note: The dilution table applies only to solid products. For liquid products, please calculate the stock solution based on the stated concentration and/or density.

Inhibitor · Natural Compounds · Compound Libraries · Recombinant Proteins

This product is for Research Use Only · Not for Human or Veterinary or Therapeutic Use

Tel:781-999-4286 E\_mail:info@targetmol.com Address:34 Washington Street,Wellesley Hills,MA 02481