

## Cyclopropenone probe 1

## Chemical Properties

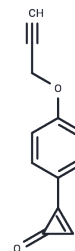
CAS No. :

Formula: C<sub>12</sub>H<sub>8</sub>O<sub>2</sub>

Molecular Weight: 184.19

Storage: Powder: -20°C for 3 years | In solvent: -80°C for 1 year

Actual storage temperature shall be subject to the COA.



## Biological Description

Description	Cyclopropenone probe 1 can specifically and efficiently modify a triple-negative breast cancer driver, glutathione S-transferase pi-1 (GSTP1), by covalently binding at the catalytic active site.
Targets(IC50)	Others

## Preparing Stock Solutions

	1mg	5mg	10mg
1 mM	5.4292 mL	27.1459 mL	54.2918 mL
5 mM	1.0858 mL	5.4292 mL	10.8584 mL
10 mM	0.5429 mL	2.7146 mL	5.4292 mL
50 mM	0.1086 mL	0.5429 mL	1.0858 mL

Please select the appropriate solvent to prepare the stock solution, according to the solubility of the product in different solvents. Please use it as soon as possible.

Note: The dilution table applies only to solid products. For liquid products, please calculate the stock solution based on the stated concentration and/or density.

**Inhibitor · Natural Compounds · Compound Libraries · Recombinant Proteins**

This product is for Research Use Only · Not for Human or Veterinary or Therapeutic Use

Tel: 781-999-4286 E\_mail: info@targetmol.com Address: 34 Washington Street, Wellesley Hills, MA 02481