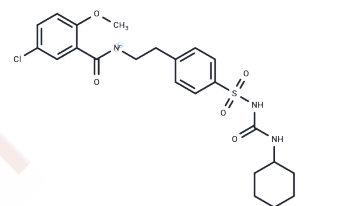


## Glibenclamide potassium

## Chemical Properties

CAS No. :	52169-36-5
Formula:	C <sub>23</sub> H <sub>27</sub> ClKN <sub>3</sub> O <sub>5</sub> S
Molecular Weight:	532.09
Storage:	Powder: -20°C for 3 years   In solvent: -80°C for 1 year Actual storage temperature shall be subject to the COA.



## Biological Description

Description	Glibenclamide potassium, also known as Glyburide potassium, is a potassium salt form of Glibenclamide. It is available in both anhydrous and hydrate versions, exhibiting greater solubility than the pure Glibenclamide [1].
Targets(IC50)	Others,CFTR,Potassium Channel

## Preparing Stock Solutions

	1mg	5mg	10mg
1 mM	1.8794 mL	9.3969 mL	18.7938 mL
5 mM	0.3759 mL	1.8794 mL	3.7588 mL
10 mM	0.1879 mL	0.9397 mL	1.8794 mL
50 mM	0.0376 mL	0.1879 mL	0.3759 mL

Please select the appropriate solvent to prepare the stock solution, according to the solubility of the product in different solvents. Please use it as soon as possible.

Note: The dilution table applies only to solid products. For liquid products, please calculate the stock solution based on the stated concentration and/or density.

Inhibitor · Natural Compounds · Compound Libraries · Recombinant Proteins

This product is for Research Use Only · Not for Human or Veterinary or Therapeutic Use

Tel:781-999-4286 E\_mail:info@targetmol.com Address:34 Washington Street,Wellesley Hills,MA 02481