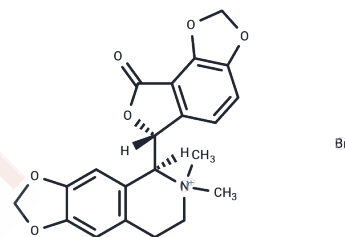


Bicuculline methobromide

Chemical Properties

CAS No. : 66016-70-4
 Formula: C₂₁H₂₀BrNO₆
 Molecular Weight: 462.29
 Storage: Powder: -20°C for 3 years | In solvent: -80°C for 1 year
 Actual storage temperature shall be subject to the COA.



Biological Description

Description	Bicuculline methobromide is a selective GABAA receptor antagonist with an IC ₅₀ of 3 μM. It can induce clonic-tonic seizures in mammals and block Ca ²⁺ -activated potassium channels, commonly used to establish models of epilepsy and related neurological disorders.
Targets(IC ₅₀)	Others

Preparing Stock Solutions

	1mg	5mg	10mg
1 mM	2.1631 mL	10.8157 mL	21.6314 mL
5 mM	0.4326 mL	2.1631 mL	4.3263 mL
10 mM	0.2163 mL	1.0816 mL	2.1631 mL
50 mM	0.0433 mL	0.2163 mL	0.4326 mL

Please select the appropriate solvent to prepare the stock solution, according to the solubility of the product in different solvents. Please use it as soon as possible.

Note: The dilution table applies only to solid products. For liquid products, please calculate the stock solution based on the stated concentration and/or density.

Inhibitor · Natural Compounds · Compound Libraries · Recombinant Proteins

This product is for Research Use Only · Not for Human or Veterinary or Therapeutic Use

Tel:781-999-4286 E_mail:info@targetmol.com Address:34 Washington Street,Wellesley Hills,MA 02481