

Eleven-Nineteen-Leukemia Protein IN-2

Chemical Properties

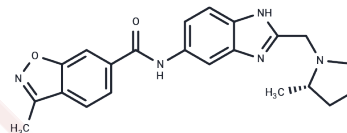
CAS No. : 2894121-78-7

Formula: C₂₂H₂₃N₅O₂

Molecular Weight: 389.45

Storage: Powder: -20°C for 3 years | In solvent: -80°C for 1 year

Actual storage temperature shall be subject to the COA.



Biological Description

Description	Eleven-Nineteen-Leukemia Protein IN-2 (compound 23), an ENL inhibitor with an IC ₅₀ of 10.7 nM, is utilized for leukemia research [1].
Targets(IC ₅₀)	Epigenetic Reader Domain
In vitro	Eleven-Nineteen-Leukemia Protein IN-2 (0-1000 nM) inhibits ENL with an IC ₅₀ of 10.7 nM [1] and reduces the viability of MOLM-13 cells over 72 hours with an IC ₅₀ of 37.9 μM [1].

Preparing Stock Solutions

	1mg	5mg	10mg
1 mM	2.5677 mL	12.8386 mL	25.6772 mL
5 mM	0.5135 mL	2.5677 mL	5.1354 mL
10 mM	0.2568 mL	1.2839 mL	2.5677 mL
50 mM	0.0514 mL	0.2568 mL	0.5135 mL

Please select the appropriate solvent to prepare the stock solution, according to the solubility of the product in different solvents. Please use it as soon as possible.

Note: The dilution table applies only to solid products. For liquid products, please calculate the stock solution based on the stated concentration and/or density.

Inhibitor · Natural Compounds · Compound Libraries · Recombinant Proteins

This product is for Research Use Only · Not for Human or Veterinary or Therapeutic Use

Tel:781-999-4286 E_mail:info@targetmol.com Address:34 Washington Street,Wellesley Hills,MA 02481