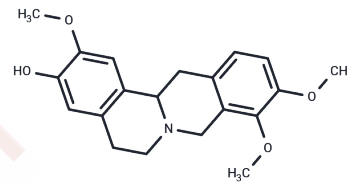


## Corypalmine

## Chemical Properties

CAS No. :	27313-86-6
Formula:	C <sub>20</sub> H <sub>23</sub> NO <sub>4</sub>
Molecular Weight:	341.4
Storage:	Keep away from direct sunlight Powder: -20°C for 3 years   In solvent: -80°C for 1 year <small>Actual storage temperature shall be subject to the COA.</small>



## Biological Description

Description	Corypalmine is a kind of alkaloid from <i>Coptis chinensis</i> and <i>purple chinensis</i> , which has inhibitory effect on the germination of plant pathogenic spores and saprophytic fungi.
Targets(IC50)	Antifungal

## Solubility Information

Solubility	DMSO: 30 mg/mL (87.87 mM), Sonication is recommended. ( $< 1$ mg/ml refers to the product slightly soluble or insoluble)
In vivo Formulation	10% DMSO+40% PEG300+5% Tween 80+45% Saline: 2 mg/mL (5.86 mM), Sonication is recommended. <i>Please add the solvents sequentially, clarifying the solution as much as possible before adding the next one. Dissolve by heating and/or sonication if necessary. Working solution is recommended to be prepared and used immediately. The formulation provided above is for reference purposes only. In vivo formulations may vary and should be modified based on specific experimental conditions.</i>

## Preparing Stock Solutions

	1mg	5mg	10mg
1 mM	2.9291 mL	14.6456 mL	29.2912 mL
5 mM	0.5858 mL	2.9291 mL	5.8582 mL
10 mM	0.2929 mL	1.4646 mL	2.9291 mL
50 mM	0.0586 mL	0.2929 mL	0.5858 mL

Please select the appropriate solvent to prepare the stock solution, according to the solubility of the product in different solvents. Please use it as soon as possible.

Note: The dilution table applies only to solid products. For liquid products, please calculate the stock solution based on the stated concentration and/or density.

Reference

Mitul Goel, et al. Effect of Ent-norsecurinine, an Alkaloid, on Spore Germination of Some Fun. Mycobiology 2002;30 (4): 225-227.

**Inhibitor · Natural Compounds · Compound Libraries · Recombinant Proteins**

This product is for Research Use Only· Not for Human or Veterinary or Therapeutic Use

Tel:781-999-4286 E\_mail:info@targetmol.com Address:34 Washington Street,Wellesley Hills,MA 02481