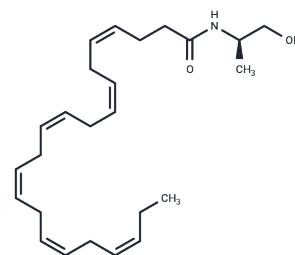


## (R)-(+)-Docosahexaenyl-1'-Hydroxy-2'-Propylamide

## Chemical Properties

CAS No. :	1282618-08-9
Formula:	C25H39NO2
Molecular Weight:	385.58
Storage:	Powder: -20°C for 3 years   In solvent: -80°C for 1 year Actual storage temperature shall be subject to the COA.



## Biological Description

Description	N-Acyl ethanolamines (NAEs) have diverse biological actions that are strongly affected by the associated acyl group. Docosahexaenoyl ethanolamide (DHEA) has potential signaling roles in cancer, inflammation, and neurological development and functioning. At least some of DHEA's effects are mediated through cannabinoid (CB) receptors, while some NAEs also act as vanilloid receptor agonists and voltage-gated K <sup>+</sup> channel blockers. (R)-(+)-Docosahexaenyl-1'-hydroxy-2'-propylamide is a homolog of DHEA, characterized by the addition of an (R)- $\alpha$ -methyl group at the methylene carbon adjacent to the amide nitrogen. A similar modification of arachidonoyl ethanolamide to produce R-1 methanandamide imparts higher affinity for the CB receptor as well as improved metabolic stability. The physiological actions of this compound have not been evaluated.
Targets(IC50)	Others

## Solubility Information

Solubility	Ethanol: 14 mg/mL (36.31 mM),Sonication is recommended. DMF: 2 mg/mL (5.19 mM),Sonication is recommended. DMSO: 14 mg/mL (36.31 mM),Sonication is recommended. Ethanol:PBS (pH 7.2)(1:2): 0.3 mg/mL (0.78 mM),Sonication is recommended. (< 1 mg/ml refers to the product slightly soluble or insoluble)
------------	--

### Preparing Stock Solutions

---

	<b>1mg</b>	<b>5mg</b>	<b>10mg</b>
1 mM	2.5935 mL	12.9675 mL	25.935 mL
5 mM	0.5187 mL	2.5935 mL	5.187 mL
10 mM	0.2593 mL	1.2967 mL	2.5935 mL
50 mM	0.0519 mL	0.2593 mL	0.5187 mL

---

Please select the appropriate solvent to prepare the stock solution, according to the solubility of the product in different solvents. Please use it as soon as possible.

Note: The dilution table applies only to solid products. For liquid products, please calculate the stock solution based on the stated concentration and/or density.

**Inhibitor · Natural Compounds · Compound Libraries · Recombinant Proteins**

This product is for Research Use Only · Not for Human or Veterinary or Therapeutic Use

Tel:781-999-4286 E\_mail:info@targetmol.com Address:34 Washington Street,Wellesley Hills,MA 02481