

## Angiotensin 1/2 (1-8) amide

## Chemical Properties

CAS No. :

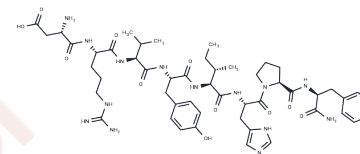
Formula: C50H72N14O11

Molecular Weight: 1045.19

Keep away from moisture

Storage: Powder: -20°C for 3 years | In solvent: -80°C for 1 year

Actual storage temperature shall be subject to the COA.



## Biological Description

Description	Angiotensin 1/2 (1-8) amide (H <sub>2</sub> N-Asp-Arg-Val-Tyr-Ile-His-Pro-Phe-amide) is a peptide analog to angiotensin II that is used as a vasopressor agent in the treatment of certain types of shock and circulatory collapse. It is a potent vasoconstrictor and is used as a cardiac stimulant.
Targets(IC50)	Others

## Solubility Information

Solubility	DMSO: ≥104.5 mg/mL, Sonication is recommended. (< 1 mg/ml refers to the product slightly soluble or insoluble)
------------	---

## Preparing Stock Solutions

	1mg	5mg	10mg
1 mM	0.9568 mL	4.7838 mL	9.5676 mL
5 mM	0.1914 mL	0.9568 mL	1.9135 mL
10 mM	0.0957 mL	0.4784 mL	0.9568 mL
50 mM	0.0191 mL	0.0957 mL	0.1914 mL

Please select the appropriate solvent to prepare the stock solution, according to the solubility of the product in different solvents. Please use it as soon as possible.

Note: The dilution table applies only to solid products. For liquid products, please calculate the stock solution based on the stated concentration and/or density.

**Inhibitor · Natural Compounds · Compound Libraries · Recombinant Proteins**

This product is for Research Use Only · Not for Human or Veterinary or Therapeutic Use

Tel: 781-999-4286 E\_mail: info@targetmol.com Address: 34 Washington Street, Wellesley Hills, MA 02481