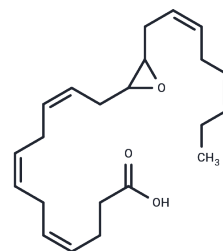


(±)13(14)-EpDPA**Chemical Properties**

CAS No. : 895127-64-7
 Formula: C22H32O3
 Molecular Weight: 344.495
 Storage: Powder: -20°C for 3 years | In solvent: -80°C for 1 year
Actual storage temperature shall be subject to the COA.

**Biological Description**

Description	Cytochrome P450 metabolism of polyunsaturated fatty acids produces numerous bioactive epoxide regioisomers. (±)13(14)-EpDPA is a docosahexaenoic acid epoxygenase metabolite, derived via epoxidation of the 13,14-double bond of DHA. It has been detected in rat brain and spinal cord and is a preferred substrate for soluble epoxide hydrolase with a Km value of 3.2 μM. (±)13(14)-EpDPA demonstrates antihyperalgesic activity in inflammatory and neuropathic pain models. (±)13(14)-EpDPA and other epoxy metabolites of DHA are also reported to potently inhibit angiogenesis and tumor growth in in vitro assays.
Targets(IC50)	Others,Cytochromes P450

Solubility Information

Solubility	DMSO: 20 mg/mL (58.06 mM),Sonication is recommended. Ethanol:PBS(pH 7.2) (1:1): 0.5 mg/mL (1.45 mM),Sonication is recommended. DMF: 25 mg/mL (72.57 mM),Sonication is recommended. Ethanol: 50 mg/mL (145.14 mM),Sonication is recommended. (< 1 mg/ml refers to the product slightly soluble or insoluble)
------------	---

Preparing Stock Solutions

	1mg	5mg	10mg
1 mM	2.9028 mL	14.5138 mL	29.0276 mL
5 mM	0.5806 mL	2.9028 mL	5.8055 mL
10 mM	0.2903 mL	1.4514 mL	2.9028 mL
50 mM	0.0581 mL	0.2903 mL	0.5806 mL

Please select the appropriate solvent to prepare the stock solution, according to the solubility of the product in different solvents. Please use it as soon as possible.

Note: The dilution table applies only to solid products. For liquid products, please calculate the stock solution based on the stated concentration and/or density.

Inhibitor · Natural Compounds · Compound Libraries · Recombinant Proteins

This product is for Research Use Only · Not for Human or Veterinary or Therapeutic Use

Tel:781-999-4286 E_mail:info@targetmol.com Address:34 Washington Street,Wellesley Hills,MA 02481