

BCL6-IN-7

Chemical Properties

CAS No. : 2097518-46-0

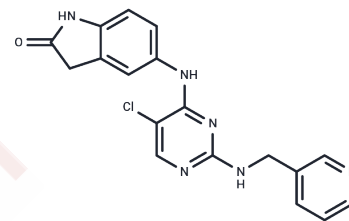
Formula: C₁₈H₁₅ClN₆O

Molecular Weight: 366.8

Storage: Keep away from direct sunlight, Keep away from moisture

Powder: -20°C for 3 years | In solvent: -80°C for 1 year

Actual storage temperature shall be subject to the COA.



Biological Description

Description	BCL6-IN-7 (BCL6 inhibitor-7) is a BCL6 co-repressor interaction inhibitor with potential anticancer activity. It can be used for studying lymphomas.
Targets(IC50)	Bcl-2 Family, Bcl-6

Solubility Information

Solubility	DMSO: 4 mg/mL (10.91 mM), Sonication is recommended. (< 1 mg/ml refers to the product slightly soluble or insoluble)
------------	---

Preparing Stock Solutions

	1mg	5mg	10mg
1 mM	2.7263 mL	13.6314 mL	27.2628 mL
5 mM	0.5453 mL	2.7263 mL	5.4526 mL
10 mM	0.2726 mL	1.3631 mL	2.7263 mL
50 mM	0.0545 mL	0.2726 mL	0.5453 mL

Please select the appropriate solvent to prepare the stock solution, according to the solubility of the product in different solvents. Please use it as soon as possible.

Note: The dilution table applies only to solid products. For liquid products, please calculate the stock solution based on the stated concentration and/or density.

Reference

Kamada Y, et al. Discovery of a B-Cell Lymphoma 6 Protein-Protein Interaction Inhibitor by a Biophysics-Driven Fragment-Based Approach. *J Med Chem*. 2017 May 25;60(10):4358-4368.

Phadnis-Moghe AS, et al. SHP-1 is directly activated by the aryl hydrocarbon receptor and regulates BCL-6 in the presence of 2,3,7,8-tetrachlorodibenzo-p-dioxin (TCDD). *Toxicol Appl Pharmacol*. 2016 Nov 1;310:41-50.

Shaw LA, et al. Id2 reinforces TH1 differentiation and inhibits E2A to repress TFH differentiation. *Nat Immunol*. 2016 Jul;17(7):834-43.

Dupont T, et al. Selective targeting of BCL6 induces oncogene addiction switching to BCL2 in B-cell lymphoma. *Oncotarget*. 2016 Jan 19;7(3):3520-32.

Inhibitor · Natural Compounds · Compound Libraries · Recombinant Proteins

This product is for Research Use Only · Not for Human or Veterinary or Therapeutic Use

Tel:781-999-4286 E_mail:info@targetmol.com Address:34 Washington Street,Wellesley Hills,MA 02481