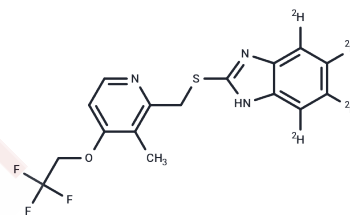


Lansoprazole Sulfide-D4

Chemical Properties

CAS No. :	1216682-38-0
Formula:	C ₁₆ H ₁₄ F ₃ N ₃ O ₅
Molecular Weight:	357.39
Storage:	Powder: -20°C for 3 years In solvent: -80°C for 1 year Actual storage temperature shall be subject to the COA.



Biological Description

Description	Lansoprazole Sulfide-D4 is a deuterium labeled Lansoprazole Sulfide. Lansoprazole Sulfide (T21128) is an orally active anti-TB (Mycobacterium tuberculosis) agent with IC ₅₀ values of 0.59 μM intracellularly and 0.46 μM in broth. Lansoprazole Sulfide is an active metabolite of the proton pump inhibitor Lansoprazole.
Targets(IC ₅₀)	Proton pump, Antibacterial

Preparing Stock Solutions

	1mg	5mg	10mg
1 mM	2.7981 mL	13.9903 mL	27.9806 mL
5 mM	0.5596 mL	2.7981 mL	5.5961 mL
10 mM	0.2798 mL	1.399 mL	2.7981 mL
50 mM	0.056 mL	0.2798 mL	0.5596 mL

Please select the appropriate solvent to prepare the stock solution, according to the solubility of the product in different solvents. Please use it as soon as possible.

Note: The dilution table applies only to solid products. For liquid products, please calculate the stock solution based on the stated concentration and/or density.

Reference

Mdanda S, et al. Lansoprazole-sulfide, pharmacokinetics of this promising anti-tuberculous agent. Biomed Chromatogr. 2017 Dec;31(12).

Inhibitor · Natural Compounds · Compound Libraries · Recombinant Proteins

This product is for Research Use Only · Not for Human or Veterinary or Therapeutic Use

Tel: 781-999-4286 E_mail: info@targetmol.com Address: 34 Washington Street, Wellesley Hills, MA 02481