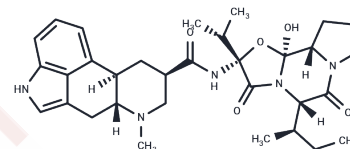


Epicriptine

Chemical Properties

| | |
|-------------------|---|
| CAS No. : | 88660-47-3 |
| Formula: | C32H43N5O5 |
| Molecular Weight: | 577.71 |
| Storage: | Powder: -20°C for 3 years In solvent: -80°C for 1 year Actual storage temperature shall be subject to the COA. |



Biological Description

| | |
|---------------|--|
| Description | Epicriptine or beta-dihydroergocryptine is a dopamine agonist of the ergoline class. It constitutes one third of the mixture known as dihydroergocryptine, the other two thirds consisting of alpha-dihydroergocryptine. The alpha differs from the beta form only in the position of a single methyl group, which is a consequence of the biosynthesis in which the proteinogenic amino acid isoleucine is replaced by leucine. |
| Targets(IC50) | Others |

Preparing Stock Solutions

| | 1mg | 5mg | 10mg |
|-------|-----------|-----------|------------|
| 1 mM | 1.731 mL | 8.6549 mL | 17.3097 mL |
| 5 mM | 0.3462 mL | 1.731 mL | 3.4619 mL |
| 10 mM | 0.1731 mL | 0.8655 mL | 1.731 mL |
| 50 mM | 0.0346 mL | 0.1731 mL | 0.3462 mL |

Please select the appropriate solvent to prepare the stock solution, according to the solubility of the product in different solvents. Please use it as soon as possible.

Note: The dilution table applies only to solid products. For liquid products, please calculate the stock solution based on the stated concentration and/or density.

Inhibitor · Natural Compounds · Compound Libraries · Recombinant Proteins

This product is for Research Use Only · Not for Human or Veterinary or Therapeutic Use

Tel: 781-999-4286 E_mail: info@targetmol.com Address: 34 Washington Street, Wellesley Hills, MA 02481