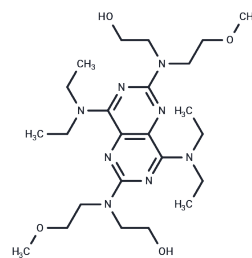


RA 642

## Chemical Properties

CAS No. : 54093-30-0  
 Formula: C<sub>24</sub>H<sub>44</sub>N<sub>8</sub>O<sub>4</sub>  
 Molecular Weight: 508.66  
 Storage: Powder: -20°C for 3 years | In solvent: -80°C for 1 year  
 Actual storage temperature shall be subject to the COA.



## Biological Description

Description	RA 642 is used as a PDE-inhibitor.
Targets(IC50)	Others,PDE

## Preparing Stock Solutions

	1mg	5mg	10mg
1 mM	1.9659 mL	9.8297 mL	19.6595 mL
5 mM	0.3932 mL	1.9659 mL	3.9319 mL
10 mM	0.1966 mL	0.983 mL	1.9659 mL
50 mM	0.0393 mL	0.1966 mL	0.3932 mL

Please select the appropriate solvent to prepare the stock solution, according to the solubility of the product in different solvents. Please use it as soon as possible.

Note: The dilution table applies only to solid products. For liquid products, please calculate the stock solution based on the stated concentration and/or density.

## Reference

Jonkman FA, Thoolen MJ, Wilffert B, de Jonge A, Timmermans PB, Van Zwieten PA. Effect of salbutamol and the PDE-inhibitor RA 642 on the clonidine withdrawal syndrome in rats. *J Auton Pharmacol.* 1984 Sep;4(3):199-206. PubMed PMID: 6092386.

de la Cruz JP, Moreno A, Mérida F, García-Campos J, Sánchez de la Cuesta F. The pyrimido-pyrimidine derivatives, diprydamole and RA-642, reduce opacification of crystalline lens in diabetic rats. *Pharmacol Toxicol.* 1994 Nov;75(5):250-4. PubMed PMID: 7870694.

De La Cruz JP, Villalobos MA, Carrasco T, Smith-Agreda JM, Sánchez de la Cuesta F. The pyrimido-pyrimidine derivative RA-642 protects from brain injury in a combined model of permanent focal ischemia and global ischemia reperfusion. *Brain Res.* 1992 Dec 4;597(2):250-6. PubMed PMID: 1472997.

Hock CE, Lefer DJ, Lefer AM. Anti-shock actions of the pyrimido-pyrimidine derivative, RA-642. *Methods Find Exp Clin Pharmacol.* 1986 May;8(5):265-9. PubMed PMID: 3724301.

**Inhibitor · Natural Compounds · Compound Libraries · Recombinant Proteins**

This product is for Research Use Only · Not for Human or Veterinary or Therapeutic Use

Tel:781-999-4286 E\_mail:info@targetmol.com Address:34 Washington Street,Wellesley Hills,MA 02481