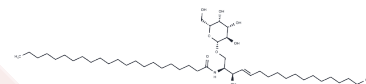


## C22 Galactosylceramide (d18:1/22:0)

## Chemical Properties

CAS No. :	74645-25-3
Formula:	C46H89NO8
Molecular Weight:	784.20
Storage:	Powder: -20°C for 3 years   In solvent: -80°C for 1 year Actual storage temperature shall be subject to the COA.



## Biological Description

Description	C22 Galactosylceramide is a sphingolipid that has been found in the central nervous system.1,2C22 Galactosylceramide levels are increased in the spinal cord, but not the brain or liver, of mice fed a methionine-restricted diet.1C22 Galactosylceramide has been found in postmortem hippocampus from patients with Alzheimer's disease.2 [Matreya, LLC.]
Targets(IC50)	Others,Endogenous Metabolite

## Preparing Stock Solutions

	1mg	5mg	10mg
1 mM	1.2752 mL	6.3759 mL	12.7518 mL
5 mM	0.255 mL	1.2752 mL	2.5504 mL
10 mM	0.1275 mL	0.6376 mL	1.2752 mL
50 mM	0.0255 mL	0.1275 mL	0.255 mL

Please select the appropriate solvent to prepare the stock solution, according to the solubility of the product in different solvents. Please use it as soon as possible.

Note: The dilution table applies only to solid products. For liquid products, please calculate the stock solution based on the stated concentration and/or density.

## Reference

Jové, M., Ayala, V., Ramírez-Núñez, O., et al. Specific lipidome signatures in central nervous system from methionine-restricted mice. *Proteome Res.* 12(6)2679-2689(2013)

Hejazi, L., Wong, J.W.H., Cheng, D., et al. Mass and relative elution time profiling: Two-dimensional analysis of sphingolipids in Alzheimer's disease brains *Biochem. J.* 438(1)165-175(2011)

**Inhibitor · Natural Compounds · Compound Libraries · Recombinant Proteins**

This product is for Research Use Only · Not for Human or Veterinary or Therapeutic Use

Tel: 781-999-4286 E\_mail: info@targetmol.com Address: 34 Washington Street, Wellesley Hills, MA 02481