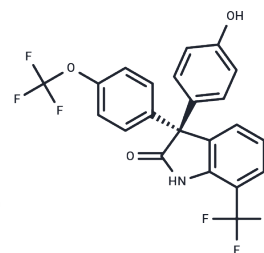


## ErSO

## Chemical Properties

CAS No. :	2407860-35-7
Formula:	C <sub>22</sub> H <sub>13</sub> F <sub>6</sub> NO <sub>3</sub>
Molecular Weight:	453.33
Storage:	Powder: -20°C for 3 years   In solvent: -80°C for 1 year Actual storage temperature shall be subject to the COA.



## Biological Description

Description	ErSO is a selective activator of anticipatory unfolded protein response (UPR) via ER $\alpha$ receptor. ErSO can be used in studies about anti-cancer.
Targets(IC50)	Estrogen Receptor/ERR,Others
In vitro	In MCF-7 cells, ErSO (1-1000 nM) inhibits cell viability with an IC <sub>50</sub> of 20.3 nM. ErSO (1 $\mu$ M) rapidly kills ER $\alpha$ -positive breast cancer cells in TYS and TDG cells and induces rapid killing of ER $\alpha$ -positive MCF-7 human breast cancer cells[1].
In vivo	ErSO (10 and 40 mg/kg; p.o.) induces >100000-fold regression (to undetectable amounts) within 14 days and >10000-fold regression of TYS-luciferase-expressing breast tumors in all five mice. In Nu/J mice, ErSO (10 or 40 mg/kg; p.o.) eliminates tumors with >90% reduction in all cases[1].

## Solubility Information

Solubility	DMSO: 237.5 mg/mL (523.9 mM),Sonication is recommended. (< 1 mg/ml refers to the product slightly soluble or insoluble)
------------	--

## Preparing Stock Solutions

	1mg	5mg	10mg
1 mM	2.2059 mL	11.0295 mL	22.059 mL
5 mM	0.4412 mL	2.2059 mL	4.4118 mL
10 mM	0.2206 mL	1.1029 mL	2.2059 mL
50 mM	0.0441 mL	0.2206 mL	0.4412 mL

Please select the appropriate solvent to prepare the stock solution, according to the solubility of the product in different solvents. Please use it as soon as possible.

Note: The dilution table applies only to solid products. For liquid products, please calculate the stock solution based on the stated concentration and/or density.

Reference

Boudreau MW, et al. A small-molecule activator of the unfolded protein response eradicates human breast tumors in mice. *Sci Transl Med.* 2021;13(603):eabf1383.

**Inhibitor · Natural Compounds · Compound Libraries · Recombinant Proteins**

This product is for Research Use Only · Not for Human or Veterinary or Therapeutic Use

Tel:781-999-4286 E\_mail:info@targetmol.com Address:34 Washington Street,Wellesley Hills,MA 02481