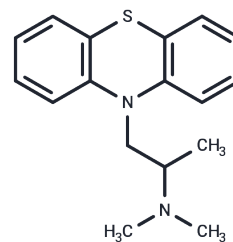


Promethazine

Chemical Properties

CAS No. :	60-87-7
Formula:	C ₁₇ H ₂₀ N ₂ S
Molecular Weight:	284.42
Storage:	Powder: -20°C for 3 years In solvent: -80°C for 1 year Actual storage temperature shall be subject to the COA.



Biological Description

Description	Promethazine (Proazamine) is an analogue of anti-glaucoma prostaglandin (PG) .
Targets(IC50)	CaMK,5-HT Receptor,Adrenergic Receptor,AChR,Histamine Receptor,Dopamine Receptor

Solubility Information

Solubility	DMSO: 11.01 mg/mL (38.71 mM),Sonication is recommended. (< 1 mg/ml refers to the product slightly soluble or insoluble)
In vivo Formulation	10% DMSO+40% PEG300+5% Tween 80+45% Saline: 2 mg/mL (7.03 mM),Sonication is recommended. <i>Please add the solvents sequentially, clarifying the solution as much as possible before adding the next one. Dissolve by heating and/or sonication if necessary. Working solution is recommended to be prepared and used immediately. The formulation provided above is for reference purposes only. In vivo formulations may vary and should be modified based on specific experimental conditions.</i>

Preparing Stock Solutions

	1mg	5mg	10mg
1 mM	3.5159 mL	17.5796 mL	35.1593 mL
5 mM	0.7032 mL	3.5159 mL	7.0319 mL
10 mM	0.3516 mL	1.758 mL	3.5159 mL
50 mM	0.0703 mL	0.3516 mL	0.7032 mL

Please select the appropriate solvent to prepare the stock solution, according to the solubility of the product in different solvents. Please use it as soon as possible.

Note: The dilution table applies only to solid products. For liquid products, please calculate the stock solution based on the stated concentration and/or density.

Reference

Suzuki A, et al. Ther Drug Monit. 2003 Apr; 25(2):192-6.

Inhibitor · Natural Compounds · Compound Libraries · Recombinant Proteins

This product is for Research Use Only· Not for Human or Veterinary or Therapeutic Use

Tel:781-999-4286 E_mail:info@targetmol.com Address:34 Washington Street,Wellesley Hills,MA 02481