

MALTOHEXAOSE

Chemical Properties

CAS No. : 34620-77-4

Formula: C₃₆H₆₂O₃₁

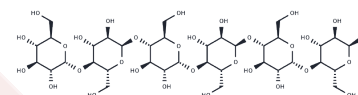
Molecular Weight: 990.86

Store at low temperature, Keep away from direct sunlight

Storage:

Powder: -20°C for 3 years | In solvent: -80°C for 1 year

Actual storage temperature shall be subject to the COA.



Biological Description

Description	Maltohexaose (Amylohexaose) is a natural saccharide that can be produced from amylose, amylopectin, and whole starch.
Targets(IC50)	Endogenous Metabolite

Solubility Information

Solubility	DMSO: 25 mg/mL (25.23 mM), Sonication is recommended. (< 1 mg/ml refers to the product slightly soluble or insoluble)
------------	--

Preparing Stock Solutions

	1mg	5mg	10mg
1 mM	1.0092 mL	5.0461 mL	10.0922 mL
5 mM	0.2018 mL	1.0092 mL	2.0184 mL
10 mM	0.1009 mL	0.5046 mL	1.0092 mL
50 mM	0.0202 mL	0.1009 mL	0.2018 mL

Please select the appropriate solvent to prepare the stock solution, according to the solubility of the product in different solvents. Please use it as soon as possible.

Note: The dilution table applies only to solid products. For liquid products, please calculate the stock solution based on the stated concentration and/or density.

Reference

Li Z , Su L , Duan X , et al. Efficient Expression of Maltohexaose-Forming α -Amylase from *Bacillus stearothermophilus* in *Brevibacillus choshinensis* SP3 and Its Use in Maltose Production: [J]. *BioMed Research International*, 2017, 2017:1-11.

Inhibitor · Natural Compounds · Compound Libraries · Recombinant Proteins

This product is for Research Use Only · Not for Human or Veterinary or Therapeutic Use

Tel:781-999-4286 E_mail:info@targetmol.com Address:34 Washington Street,Wellesley Hills,MA 02481