

## RET-IN-3

## Chemical Properties

CAS No. : 2414374-53-9

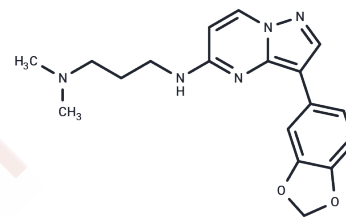
Formula: C<sub>18</sub>H<sub>21</sub>N<sub>5</sub>O<sub>2</sub>

Molecular Weight: 339.39

Store at low temperature

Storage: Powder: -20°C for 3 years | In solvent: -80°C for 1 year

Actual storage temperature shall be subject to the COA.



## Biological Description

Description	RET-IN-3 is a RETV804M kinase inhibitor with potential anticancer activity for the study of non-small cell lung cancer.
Targets(IC50)	c-RET
In vitro	In comparison to wt-RET and KDR, RET-IN-3 demonstrates selectivity with folds of 16 and 410, respectively.[1].

## Solubility Information

Solubility	DMSO: 50 mg/mL (147.32 mM),Sonication is recommended. (< 1 mg/ml refers to the product slightly soluble or insoluble)
In vivo Formulation	10% DMSO+40% PEG300+5% Tween 80+45% Saline: 2 mg/mL (5.89 mM),Sonication is recommended. <i>Please add the solvents sequentially, clarifying the solution as much as possible before adding the next one. Dissolve by heating and/or sonication if necessary. Working solution is recommended to be prepared and used immediately. The formulation provided above is for reference purposes only. In vivo formulations may vary and should be modified based on specific experimental conditions.</i>

### Preparing Stock Solutions

---

	1mg	5mg	10mg
1 mM	2.9465 mL	14.7323 mL	29.4646 mL
5 mM	0.5893 mL	2.9465 mL	5.8929 mL
10 mM	0.2946 mL	1.4732 mL	2.9465 mL
50 mM	0.0589 mL	0.2946 mL	0.5893 mL

---

Please select the appropriate solvent to prepare the stock solution, according to the solubility of the product in different solvents. Please use it as soon as possible.

Note: The dilution table applies only to solid products. For liquid products, please calculate the stock solution based on the stated concentration and/or density.

### Reference

Rebecca Newton, et al. Discovery and Optimization of wt-RET/KDR-Selective Inhibitors of RET V804M Kinase. ACS Med Chem Lett. 2020 Feb 28;11(4):497-505.

**Inhibitor · Natural Compounds · Compound Libraries · Recombinant Proteins**

This product is for Research Use Only · Not for Human or Veterinary or Therapeutic Use

Tel:781-999-4286 E\_mail:info@targetmol.com Address:34 Washington Street,Wellesley Hills,MA 02481