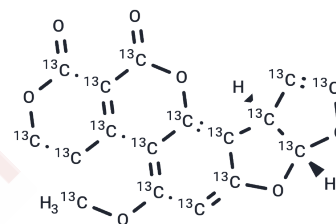


Aflatoxin G1-13C17

Chemical Properties

CAS No. :	1217444-07-9
Formula:	C ₁₇ H ₁₂ O ₇
Molecular Weight:	345.146
Storage:	Powder: -20°C for 3 years In solvent: -80°C for 1 year Actual storage temperature shall be subject to the COA.



Biological Description

Description	Aflatoxin G1-13C17 is intended for use as an internal standard for the quantification of aflatoxin G1 by GC- or LC-MS. Aflatoxin G1 is a mycotoxin that has been found in <i>A. terreicola</i> . ¹
In vivo	In vivo, aflatoxin G1 is lethal to ducklings (LD ₅₀ = 1.18 mg/kg). ² It induces hepatocellular carcinoma tumor formation and lethality in rats when administered at doses of 1.4 and 3 mg/animal, respectively. Aflatoxin G1 also inhibits liver and kidney succinate dehydrogenase and fumarase, as well as kidney cytochrome oxidase, NADH oxidase, α-glycerophosphate dehydrogenase, isocitrate dehydrogenase, and malate dehydrogenase in rats. ³

Solubility Information

Solubility	Acetonitrile: Soluble (< 1 mg/ml refers to the product slightly soluble or insoluble)
------------	--

Preparing Stock Solutions

	1mg	5mg	10mg
1 mM	2.8973 mL	14.4865 mL	28.9729 mL
5 mM	0.5795 mL	2.8973 mL	5.7946 mL
10 mM	0.2897 mL	1.4486 mL	2.8973 mL
50 mM	0.0579 mL	0.2897 mL	0.5795 mL

Please select the appropriate solvent to prepare the stock solution, according to the solubility of the product in different solvents. Please use it as soon as possible.

Note: The dilution table applies only to solid products. For liquid products, please calculate the stock solution based on the stated concentration and/or density.

Reference

Moubasher, A.H., el-Kady, I.A., and Shoriet, A. Toxigenic Aspergilli isolated from different sources in Egypt. *Ann. Nutr. Aliment.* 31(4-6):607-615(1977)

Wogan, G.N., Edwards, G.S., and Newberne, P.M. Structure-activity relationships in toxicity and carcinogenicity of aflatoxins and analogs. *Cancer Res.* 31(12):1936-1942(1971)

Bai, N.J., Pai, M.R., and Venkatasubramanian, T.A. Mitochondrial function in aflatoxin toxicity. *Indian J. Biochem. Biophys.* 14(4):347-349(1977)

Inhibitor · Natural Compounds · Compound Libraries · Recombinant Proteins

This product is for Research Use Only · Not for Human or Veterinary or Therapeutic Use

Tel: 781-999-4286 E_mail: info@targetmol.com Address: 34 Washington Street, Wellesley Hills, MA 02481