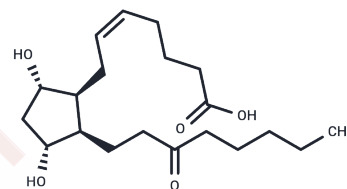


8-iso-13,14-dihydro-15-keto Prostaglandin F2 α

Chemical Properties

CAS No. :	191919-02-5
Formula:	C ₂₀ H ₃₄ O ₅
Molecular Weight:	354.48
Storage:	Powder: -20°C for 3 years In solvent: -80°C for 1 year <small>Actual storage temperature shall be subject to the COA.</small>



Biological Description

Description	8-iso-13,14-dihydro-15-keto Prostaglandin F2 α (8-iso-13,14-dihydro-15-keto PGF2 α) is a metabolite of the isoprostane, 8-isoprostane (8-iso PGF2 α), in rabbits, monkeys and humans. 8-iso PGF2 α is a PG-like product of non-specific lipid peroxidation. In both humans and monkeys, exogenously infused 8-isoprostane is converted primarily to metabolites having 2 or 4 carbon atoms removed from the top side chain by β -oxidation. A similar pattern is observed when tritiated 8-isoprostane is infused into rabbits. Early in the infusion (within 10 minutes) 8-iso-13,14-dihydro-15-keto PGF2 α was a significant component of the metabolite profile, which was comprised mostly of dinor 8-isoprostane metabolites. 8-iso-13,14-dihydro-15-keto PGF2 α weakly inhibits the U-46619 or collagen-induced aggregation of human platelets, although a number of the E-series isoprostanes are much more potent in this assay.
Targets(IC50)	Others,Endogenous Metabolite

Solubility Information

Solubility	PBS (pH 7.2): >10 mg/mL (from PGF2a),Sonication is recommended. 10 mM Na ₂ CO ₃ : >6.5 mg/mL (from PGF2a),Sonication is recommended. Ethanol: >100 mg/mL (from PGF2a),Sonication is recommended. DMSO: >100 mg/mL (from PGF2a),Sonication is recommended. DMF: >100 mg/mL (from PGF2a),Sonication is recommended. (< 1 mg/ml refers to the product slightly soluble or insoluble)
------------	--

Preparing Stock Solutions

	1mg	5mg	10mg
1 mM	2.821 mL	14.1052 mL	28.2103 mL
5 mM	0.5642 mL	2.821 mL	5.6421 mL
10 mM	0.2821 mL	1.4105 mL	2.821 mL
50 mM	0.0564 mL	0.2821 mL	0.5642 mL

Please select the appropriate solvent to prepare the stock solution, according to the solubility of the product in different solvents. Please use it as soon as possible.

Note: The dilution table applies only to solid products. For liquid products, please calculate the stock solution based on the stated concentration and/or density.

Inhibitor · Natural Compounds · Compound Libraries · Recombinant Proteins

This product is for Research Use Only · Not for Human or Veterinary or Therapeutic Use

Tel:781-999-4286 E_mail:info@targetmol.com Address:34 Washington Street,Wellesley Hills,MA 02481