

## SuO-Val-Cit-PAB-MMAE

### Chemical Properties

CAS No. :

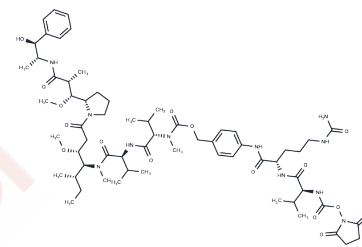
Formula: C63H97N11O16

Molecular Weight: 1264.51

Storage: Keep away from direct sunlight

Powder: -20°C for 3 years

Actual storage temperature shall be subject to the COA.



### Biological Description

Description	SuO-Val-Cit-PAB-MMAE is an ADC (antibody-drug conjugate) linker composed of the anti-mitotic monomethyl auristatin E (MMAE, a tubulin inhibitor) linked via the SuO-Val-Cit-PAB peptide.
Targets(IC50)	Drug-Linker Conjugates for ADC,PROTAC Linker
In vitro	ADCs comprise an antibody connected to an ADC cytotoxin via an ADC linker.

### Preparing Stock Solutions

	1mg	5mg	10mg
1 mM	0.7908 mL	3.9541 mL	7.9082 mL
5 mM	0.1582 mL	0.7908 mL	1.5816 mL
10 mM	0.0791 mL	0.3954 mL	0.7908 mL
50 mM	0.0158 mL	0.0791 mL	0.1582 mL

Please select the appropriate solvent to prepare the stock solution, according to the solubility of the product in different solvents. Please use it as soon as possible.

Note: The dilution table applies only to solid products. For liquid products, please calculate the stock solution based on the stated concentration and/or density.

### Reference

Kamath AV, et al. Preclinical Pharmacokinetic Considerations for the Development of Antibody Drug Conjugates. Pharm Res. 2015 Nov;32(11):3470-9.

**Inhibitor · Natural Compounds · Compound Libraries · Recombinant Proteins**

This product is for Research Use Only · Not for Human or Veterinary or Therapeutic Use

Tel:781-999-4286 E\_mail:info@targetmol.com Address:34 Washington Street,Wellesley Hills,MA 02481