

## N-Nornuciferine hydrochloride(4846-19-9 free base)

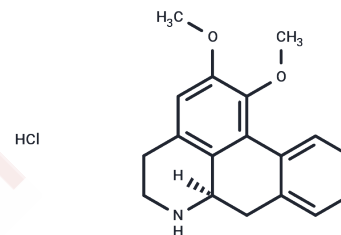
### Chemical Properties

CAS No. :

Formula: C<sub>18</sub>H<sub>20</sub>ClNO<sub>2</sub>

Molecular Weight: 317.81

Storage: Keep away from direct sunlight  
Powder: -20°C for 3 years | In solvent: -80°C for 1 year  
Actual storage temperature shall be subject to the COA.



### Biological Description

Description	N-Nornuciferine hydrochloride(4846-19-9 free base) (N-Nornuciferine hydrochloride) is an aporphine alkaloid in lotus leaf, significantly inhibits CYP2D6 (IC <sub>50</sub> : 3.76 μM, Ki: 2.34 μM).
Targets(IC <sub>50</sub> )	Cytochromes P450
In vitro	N-Nornuciferine strongly inhibits CYP2D6 activity but shows weak or no inhibition of the other four P450 isoenzymes (CYP2C19, CYP3A4, CYP2E1, CYP2C9). N-Nornuciferine competitively inhibits the CYP2D6-catalyzed dextromethorphan O-demethylation (Ki: 2.34 μM).

### Solubility Information

Solubility	DMSO: 25 mg/mL (78.66 mM),Sonication is recommended. (< 1 mg/ml refers to the product slightly soluble or insoluble)
------------	---

### Preparing Stock Solutions

	1mg	5mg	10mg
1 mM	3.1465 mL	15.7327 mL	31.4653 mL
5 mM	0.6293 mL	3.1465 mL	6.2931 mL
10 mM	0.3147 mL	1.5733 mL	3.1465 mL
50 mM	0.0629 mL	0.3147 mL	0.6293 mL

Please select the appropriate solvent to prepare the stock solution, according to the solubility of the product in different solvents. Please use it as soon as possible.

Note: The dilution table applies only to solid products. For liquid products, please calculate the stock solution based on the stated concentration and/or density.

Reference

Ye LH, et al. Identification and characterization of potent CYP2D6 inhibitors in lotus leaves. J Ethnopharmacol. 2014 Apr 11;153(1):190-6.

**Inhibitor · Natural Compounds · Compound Libraries · Recombinant Proteins**

This product is for Research Use Only · Not for Human or Veterinary or Therapeutic Use

Tel:781-999-4286 E\_mail:info@targetmol.com Address:34 Washington Street,Wellesley Hills,MA 02481