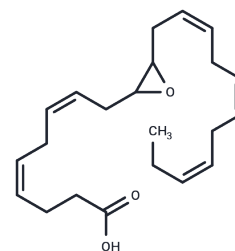


$(\pm)$ 10(11)-EpDPA

## Chemical Properties

CAS No. :	895127-65-8
Formula:	C <sub>22</sub> H <sub>32</sub> O <sub>3</sub>
Molecular Weight:	344.495
Storage:	Powder: -20°C for 3 years   In solvent: -80°C for 1 year Actual storage temperature shall be subject to the COA.



## Biological Description

Description	Cytochrome P450 metabolism of polyunsaturated fatty acids produces numerous bioactive epoxide regioisomers. $(\pm)$ 10(11)-EpDPA is a docosahexaenoic acid epoxygenase metabolite, derived via epoxidation of the 10,11-double bond of DHA. It has been detected in rat brain and spinal cord, as well as human serum, and acts as a substrate for soluble epoxide hydrolase with a $K_m$ value of 5.1 $\mu$ M. $(\pm)$ 10(11)-EpDPA and other epoxy metabolites of DHA are reported to demonstrate antihyperalgesic activity in inflammatory and neuropathic pain models and to potently inhibit angiogenesis and tumor growth in in vitro assays.
Targets(IC50)	Others, Epoxide Hydrolase

## Solubility Information

Solubility	Ethanol: 50 mg/mL (145.14 mM), Sonication is recommended. DMF: 25 mg/mL (72.57 mM), Sonication is recommended. DMSO: 20 mg/mL (58.06 mM), Sonication is recommended. Ethanol:PBS(pH 7.2) (1:1): 0.5 mg/mL (1.45 mM), Sonication is recommended. ( $< 1$ mg/ml refers to the product slightly soluble or insoluble)
------------	--

### Preparing Stock Solutions

---

	<b>1mg</b>	<b>5mg</b>	<b>10mg</b>
1 mM	2.9028 mL	14.5138 mL	29.0276 mL
5 mM	0.5806 mL	2.9028 mL	5.8055 mL
10 mM	0.2903 mL	1.4514 mL	2.9028 mL
50 mM	0.0581 mL	0.2903 mL	0.5806 mL

---

Please select the appropriate solvent to prepare the stock solution, according to the solubility of the product in different solvents. Please use it as soon as possible.

Note: The dilution table applies only to solid products. For liquid products, please calculate the stock solution based on the stated concentration and/or density.

**Inhibitor · Natural Compounds · Compound Libraries · Recombinant Proteins**

This product is for Research Use Only · Not for Human or Veterinary or Therapeutic Use

Tel:781-999-4286 E\_mail:info@targetmol.com Address:34 Washington Street,Wellesley Hills,MA 02481