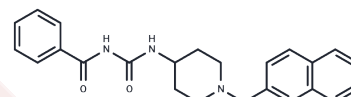


Panuramine

Chemical Properties

CAS No. : 80349-58-2
 Formula: C₂₄H₂₅N₃O₂
 Molecular Weight: 387.47
 Storage: Powder: -20°C for 3 years | In solvent: -80°C for 1 year
 Actual storage temperature shall be subject to the COA.



Biological Description

Description	Panuramine is an antidepressant which was synthesized in 1981 by Wyeth. It acts as a potent and selective serotonin reuptake inhibitor (SSRI).
Targets(IC50)	Others

Preparing Stock Solutions

	1mg	5mg	10mg
1 mM	2.5808 mL	12.9042 mL	25.8084 mL
5 mM	0.5162 mL	2.5808 mL	5.1617 mL
10 mM	0.2581 mL	1.2904 mL	2.5808 mL
50 mM	0.0516 mL	0.2581 mL	0.5162 mL

Please select the appropriate solvent to prepare the stock solution, according to the solubility of the product in different solvents. Please use it as soon as possible.

Note: The dilution table applies only to solid products. For liquid products, please calculate the stock solution based on the stated concentration and/or density.

Inhibitor · Natural Compounds · Compound Libraries · Recombinant Proteins

This product is for Research Use Only · Not for Human or Veterinary or Therapeutic Use

Tel: 781-999-4286 E_mail: info@targetmol.com Address: 34 Washington Street, Wellesley Hills, MA 02481