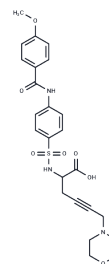


PG-116800

Chemical Properties

CAS No. : 291533-11-4
 Formula: C₂₄H₂₇N₃O₇S
 Molecular Weight: 501.55
 Storage: Powder: -20°C for 3 years | In solvent: -80°C for 1 year
 Actual storage temperature shall be subject to the COA.



Biological Description

Description	PG-116800 (PG-530742) is a matrix metalloproteinase (MMP) inhibitor. PG-116800 can be used in studies about the treatment of osteoarthritis.
Targets(IC50)	MMP

Solubility Information

Solubility	DMSO: 50 mg/mL (99.69 mM),Sonication is recommended. (< 1 mg/ml refers to the product slightly soluble or insoluble)
------------	---

Preparing Stock Solutions

	1mg	5mg	10mg
1 mM	1.9938 mL	9.9691 mL	19.9382 mL
5 mM	0.3988 mL	1.9938 mL	3.9876 mL
10 mM	0.1994 mL	0.9969 mL	1.9938 mL
50 mM	0.0399 mL	0.1994 mL	0.3988 mL

Please select the appropriate solvent to prepare the stock solution, according to the solubility of the product in different solvents. Please use it as soon as possible.

Note: The dilution table applies only to solid products. For liquid products, please calculate the stock solution based on the stated concentration and/or density.

Reference

- Hudson MP, et al. Effects of selective matrix metalloproteinase inhibitor (PG-116800) to prevent ventricular remodeling after myocardial infarction: results of the PREMIER (Prevention of Myocardial Infarction Early Remodeling) trial. *J Am Coll Cardiol.* 2006;48(1):15-20.
- Krzeski P, et al. Development of musculoskeletal toxicity without clear benefit after administration of PG-116800, a matrix metalloproteinase inhibitor, to patients with knee osteoarthritis: a randomized, 12-month, double-blind, placebo-controlled study. *Arthritis Res Ther.* 2007;9(5):R109.
- Peterson JT. The importance of estimating the therapeutic index in the development of matrix metalloproteinase inhibitors. *Cardiovasc Res.* 2006;69(3):677-687.
- Rodriguez-Merchan EC. The Current Role of Disease-modifying Osteoarthritis Drugs. *Arch Bone Jt Surg.* 2023;11(1): 11-22.

Inhibitor · Natural Compounds · Compound Libraries · Recombinant Proteins

This product is for Research Use Only · Not for Human or Veterinary or Therapeutic Use

Tel:781-999-4286 E_mail:info@targetmol.com Address:34 Washington Street,Wellesley Hills,MA 02481