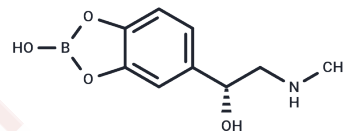


## Epinephryl borate

## Chemical Properties

CAS No. :	5579-16-8
Formula:	C <sub>9</sub> H <sub>12</sub> BNO <sub>4</sub>
Molecular Weight:	209.01
Storage:	Powder: -20°C for 3 years   In solvent: -80°C for 1 year Actual storage temperature shall be subject to the COA.



## Biological Description

Description	Epinephryl borate is an kind of adrenergic agent.
Targets(IC50)	Others

## Preparing Stock Solutions

	1mg	5mg	10mg
1 mM	4.7845 mL	23.9223 mL	47.8446 mL
5 mM	0.9569 mL	4.7845 mL	9.5689 mL
10 mM	0.4784 mL	2.3922 mL	4.7845 mL
50 mM	0.0957 mL	0.4784 mL	0.9569 mL

Please select the appropriate solvent to prepare the stock solution, according to the solubility of the product in different solvents. Please use it as soon as possible.

Note: The dilution table applies only to solid products. For liquid products, please calculate the stock solution based on the stated concentration and/or density.

## Reference

- Fong DS, Frederick AR Jr, Richter CU, Jakobiec FA. Adrenochrome deposit. Arch Ophthalmol. 1993 Aug;111(8):1142-3. PubMed PMID: 8352696.
- Begg IS, Cottle RW. Epidemiologic approach to open-angle glaucoma: 2. Survival analysis of adverse drug reactions. Report of the Canadian Ocular Adverse Drug Reaction Registry Program. The Collaborative Glaucoma Study Group. Can J Ophthalmol. 1989 Feb;24(1):15-9. PubMed PMID: 2653591.
- Liesegang TJ. Bulbar conjunctival follicles associated with dipivefrin therapy. Ophthalmology. 1985 Feb;92(2):228-33. PubMed PMID: 3982802.
- Stegman R, Miller D. A human model of allergic conjunctivitis. Arch Ophthalmol. 1975 Dec;93(12):1354-8. PubMed PMID: 1200898.

**Inhibitor · Natural Compounds · Compound Libraries · Recombinant Proteins**

This product is for Research Use Only · Not for Human or Veterinary or Therapeutic Use

Tel:781-999-4286 E\_mail:info@targetmol.com Address:34 Washington Street,Wellesley Hills,MA 02481