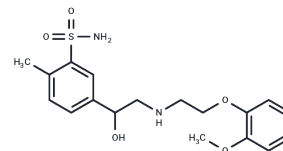


YM 09538

Chemical Properties

CAS No. : 70958-86-0
 Formula: C₁₈H₂₅ClN₂O₅
 Molecular Weight: 416.92
 Storage: Powder: -20°C for 3 years | In solvent: -80°C for 1 year
 Actual storage temperature shall be subject to the COA.



Biological Description

Description	YM 09538 is a biochemical.
Targets(IC50)	Others,Adrenergic Receptor

Preparing Stock Solutions

	1mg	5mg	10mg
1 mM	2.3985 mL	11.9927 mL	23.9854 mL
5 mM	0.4797 mL	2.3985 mL	4.7971 mL
10 mM	0.2399 mL	1.1993 mL	2.3985 mL
50 mM	0.048 mL	0.2399 mL	0.4797 mL

Please select the appropriate solvent to prepare the stock solution, according to the solubility of the product in different solvents. Please use it as soon as possible.

Note: The dilution table applies only to solid products. For liquid products, please calculate the stock solution based on the stated concentration and/or density.

Reference

Jin WL, Azuma K, Mita T, Goto H, Kanazawa A, Shimizu T, Ikeda F, Fujitani Y, Hirose T, Kawamori R, Watada H. Repetitive hypoglycaemia increases serum adrenaline and induces monocyte adhesion to the endothelium in rat thoracic aorta. *Diabetologia*. 2011 Jul;54(7):1921-9. doi: 10.1007/s00125-011-2141-5. Epub 2011 Apr 16. PubMed PMID: 21499675.

Suzuki K, Kamimura H. Pharmacokinetics and metabolism of an alpha,beta-blocker, amosulalol hydrochloride, in mice: biliary excretion of carbamoyl glucuronide. *Biol Pharm Bull*. 2007 Aug;30(8):1580-5. PubMed PMID: 17666826.

Gwak HS, Noh ES, Lee NY, Chun IK. Determination of amosulalol in human plasma using solid-phase extraction combined with liquid chromatography and ultraviolet detection. *J Chromatogr B Analyt Technol Biomed Life Sci*. 2005 Apr 25;818(2):109-13. PubMed PMID: 15734149.

Ueyama T, Aki T, Senba E, Hatanaka K, Yoshida K. Emotional stress activates MAP kinase in the rat heart. *Life Sci*. 2001 Sep 7;69(16):1927-34. PubMed PMID: 11693273.

Inhibitor · Natural Compounds · Compound Libraries · Recombinant Proteins

This product is for Research Use Only · Not for Human or Veterinary or Therapeutic Use

Tel:781-999-4286 E_mail:info@targetmol.com Address:34 Washington Street,Wellesley Hills,MA 02481