

MC-Gly-Gly-Phe

Chemical Properties

CAS No. : 1599440-15-9

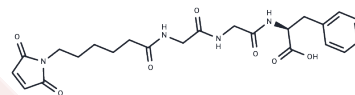
Formula: C₂₃H₂₈N₄O₇

Molecular Weight: 472.49

Keep away from direct sunlight

Storage: Powder: -20°C for 3 years | In solvent: -80°C for 1 year

Actual storage temperature shall be subject to the COA.



Biological Description

Description	MC-Gly-Gly-Phe is a cleavable linker used for antibody-drug conjugates (ADC).
Targets(IC50)	ADC Linker,PROTAC Linker

Solubility Information

Solubility	DMSO: 49 mg/mL (103.71 mM),Sonication is recommended. (< 1 mg/ml refers to the product slightly soluble or insoluble)
------------	--

Preparing Stock Solutions

	1mg	5mg	10mg
1 mM	2.1164 mL	10.5822 mL	21.1645 mL
5 mM	0.4233 mL	2.1164 mL	4.2329 mL
10 mM	0.2116 mL	1.0582 mL	2.1164 mL
50 mM	0.0423 mL	0.2116 mL	0.4233 mL

Please select the appropriate solvent to prepare the stock solution, according to the solubility of the product in different solvents. Please use it as soon as possible.

Note: The dilution table applies only to solid products. For liquid products, please calculate the stock solution based on the stated concentration and/or density.

Reference

Antibody-drug conjugate. WO2014057687A1.

Inhibitor · Natural Compounds · Compound Libraries · Recombinant Proteins

This product is for Research Use Only · Not for Human or Veterinary or Therapeutic Use

Tel:781-999-4286 E_mail:info@targetmol.com Address:34 Washington Street,Wellesley Hills,MA 02481