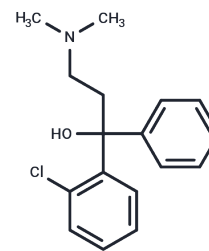


Clofedanol

Chemical Properties

CAS No. :	791-35-5
Formula:	C ₁₇ H ₂₀ ClNO
Molecular Weight:	289.8
Storage:	Powder: -20°C for 3 years In solvent: -80°C for 1 year Actual storage temperature shall be subject to the COA.



Biological Description

Description	Clofedanol, also known as chlophedianol or antitussin, is used in the treatment of pediatric pertussis.
Targets(IC50)	Others

Solubility Information

Solubility	DMSO: Soluble, (< 1 mg/ml refers to the product slightly soluble or insoluble)
------------	---

Preparing Stock Solutions

	1mg	5mg	10mg
1 mM	3.4507 mL	17.2533 mL	34.5066 mL
5 mM	0.6901 mL	3.4507 mL	6.9013 mL
10 mM	0.3451 mL	1.7253 mL	3.4507 mL
50 mM	0.069 mL	0.3451 mL	0.6901 mL

Please select the appropriate solvent to prepare the stock solution, according to the solubility of the product in different solvents. Please use it as soon as possible.

Note: The dilution table applies only to solid products. For liquid products, please calculate the stock solution based on the stated concentration and/or density.

Reference

- Eckhardt G, Goenechea S, Tondorf G. [Isolation and identification of some metabolites of clofedanol from human urine (author's transl)]. J Clin Chem Clin Biochem. 1977 Dec;15(12):687-90. German. PubMed PMID: 604421.
- Miraglia del Giudice M, Capristo AF, Mirra G, Maiello N, Coppola T. [Controlled double-blind study on the efficacy of clofedanol-sobrerol in the treatment of pediatric pertussis]. Minerva Pediatr. 1984 Dec 31;36(23-24):1199-206. Italian. PubMed PMID: 6398399.
- Maurer H, Pflieger K. Identification and differentiation of alkylamine antihistamines and their metabolites in urine by computerized gas chromatography-mass spectrometry. J Chromatogr. 1988 Aug 19;430(1):31-41. PubMed PMID: 2905706.
- NATHAN LA. Clinical evaluation of chlophedianol a new nonnarcotic antitussive. Appl Ther. 1962 Sep;4:830-1. PubMed PMID: 14478530.

Inhibitor · Natural Compounds · Compound Libraries · Recombinant Proteins

This product is for Research Use Only· Not for Human or Veterinary or Therapeutic Use

Tel:781-999-4286 E_mail:info@targetmol.com Address:34 Washington Street,Wellesley Hills,MA 02481