

NBI-27914

## Chemical Properties

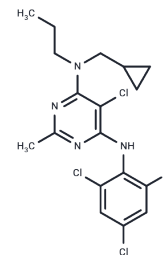
CAS No. : 184241-44-9

Formula: C<sub>18</sub>H<sub>20</sub>Cl<sub>4</sub>N<sub>4</sub>

Molecular Weight: 434.19

Storage: Keep away from moisture, Store at low temperature  
Powder: -20°C for 3 years | In solvent: -80°C for 1 year

Actual storage temperature shall be subject to the COA.



## Biological Description

Description	NBI-27914 is a selective and non-peptide CRFR1 (corticotropin-releasing factor receptor 1) antagonist with analgesic effects, capable of blocking CRF-induced anxiety.
Targets(IC50)	CRFR

## Solubility Information

Solubility DMSO: 80 mg/mL (184.25 mM), Sonication is recommended.  
(< 1 mg/ml refers to the product slightly soluble or insoluble)

## Preparing Stock Solutions

	1mg	5mg	10mg
1 mM	2.3031 mL	11.5157 mL	23.0314 mL
5 mM	0.4606 mL	2.3031 mL	4.6063 mL
10 mM	0.2303 mL	1.1516 mL	2.3031 mL
50 mM	0.0461 mL	0.2303 mL	0.4606 mL

Please select the appropriate solvent to prepare the stock solution, according to the solubility of the product in different solvents. Please use it as soon as possible.

Note: The dilution table applies only to solid products. For liquid products, please calculate the stock solution based on the stated concentration and/or density.

## Reference

Liaw CW, et al. Localization of agonist- and antagonist-binding domains of human corticotropin-releasing factor receptors. *Mol Endocrinol.* 1997;11(13):2048-2053.

Lee YC, et al. BMP4 promotes prostate tumor growth in bone through osteogenesis. *Cancer Res*, 2011, 71(15), 5194-5203.

**Inhibitor · Natural Compounds · Compound Libraries · Recombinant Proteins**

This product is for Research Use Only · Not for Human or Veterinary or Therapeutic Use

Tel:781-999-4286 E\_mail:info@targetmol.com Address:34 Washington Street,Wellesley Hills,MA 02481