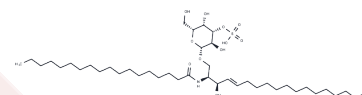


C18 3'-sulfo Galactosylceramide (d18:1/18:0)

Chemical Properties

CAS No. :	244215-65-4
Formula:	C42H81NO11S
Molecular Weight:	808.17
Storage:	Powder: -20°C for 3 years In solvent: -80°C for 1 year Actual storage temperature shall be subject to the COA.



Biological Description

Description	C18 3'-sulfo Galactosylceramide is a member of the sulfatide class of glycolipids. Levels of short-chain sulfatides, including C18 3'-sulfo galactosylceramide, decrease with age in mice and humans. It is increased in brain from mice with an arylsulfatase A deficiency (ASA-KO), particularly in lipid raft fractions. Plasma levels of C18 3'-sulfo galactosylceramide positively correlate with disability progression in patients with relapsing-remitting multiple sclerosis using the Expanded Disability Status Scale. It is also increased in plasma from patients with metachromatic leukodystrophy (MLD).
Targets(IC50)	Others

Solubility Information

Solubility	Chloroform:Methanol (5:1): Soluble (< 1 mg/ml refers to the product slightly soluble or insoluble)
------------	---

Preparing Stock Solutions

	1mg	5mg	10mg
1 mM	1.2374 mL	6.1868 mL	12.3736 mL
5 mM	0.2475 mL	1.2374 mL	2.4747 mL
10 mM	0.1237 mL	0.6187 mL	1.2374 mL
50 mM	0.0247 mL	0.1237 mL	0.2475 mL

Please select the appropriate solvent to prepare the stock solution, according to the solubility of the product in different solvents. Please use it as soon as possible.

Note: The dilution table applies only to solid products. For liquid products, please calculate the stock solution based on the stated concentration and/or density.

Inhibitor · Natural Compounds · Compound Libraries · Recombinant Proteins

This product is for Research Use Only · Not for Human or Veterinary or Therapeutic Use

Tel:781-999-4286 E_mail:info@targetmol.com Address:34 Washington Street,Wellesley Hills,MA 02481