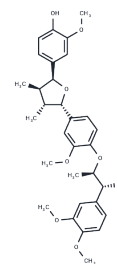


## Saucerneol

## Chemical Properties

CAS No. :	88497-86-3
Formula:	C <sub>31</sub> H <sub>38</sub> O <sub>8</sub>
Molecular Weight:	538.637
Storage:	Powder: -20°C for 3 years   In solvent: -80°C for 1 year Actual storage temperature shall be subject to the COA.



## Biological Description

Description	Saucerneol has significant cardiovascular effects such as vasorelaxant and negative inotropic actions.
Targets(IC50)	MEK
In vitro	Saururus chinensis has been widely used as a traditional medicine for the treatment of beriberi, hypertension, pneumonia, edema, jaundice and gonorrhoea. However, there is only limited information on the cardiovascular effects of <i>S. chinensis</i> extract or its single compounds. METHODS AND RESULTS: The present study was performed to investigate the effects of active lignans isolated from the extract of <i>S. chinensis</i> on vascular responses and heart functions. The vasorelaxant activity-guided fractionation of roots extract of <i>S. chinensis</i> led to the isolation of eight lignans as active principles. These lignans produced concentration-dependent relaxations of the endothelium-intact aortic preparations of rat aorta. Particularly, Saucerneol (1), Saucerneol D (2) and machilin D (8) exhibited distinctive vasorelaxant activity (EC <sub>50</sub> values: 2.2, 12.7 and 17.8 μM, respectively), which were significantly inhibited by removal of functional endothelium or pretreatment with N G-nitro-L-arginine methyl ester. Saucerneol (1) and Saucerneol D (2) caused a significant decrease in left ventricular pressure, +dP/dt <sub>max</sub> and heart rate in isolated hearts. CONCLUSIONS: These results suggest that several lignans including Saucerneol (1), Saucerneol D (2) and machilin D (8), isolated from the ethanol extract of the roots of <i>S. chinensis</i> , have significant cardiovascular effects such as vasorelaxant and negative inotropic actions.

### Preparing Stock Solutions

---

	1mg	5mg	10mg
1 mM	1.8565 mL	9.2826 mL	18.5653 mL
5 mM	0.3713 mL	1.8565 mL	3.7131 mL
10 mM	0.1857 mL	0.9283 mL	1.8565 mL
50 mM	0.0371 mL	0.1857 mL	0.3713 mL

---

Please select the appropriate solvent to prepare the stock solution, according to the solubility of the product in different solvents. Please use it as soon as possible.

Note: The dilution table applies only to solid products. For liquid products, please calculate the stock solution based on the stated concentration and/or density.

### Reference

Cardiovascular Effects of Lignans Isolated from *Saururus chinensis*. *Planta Med* 2008; 74(3): 233-238.

**Inhibitor · Natural Compounds · Compound Libraries · Recombinant Proteins**

This product is for Research Use Only · Not for Human or Veterinary or Therapeutic Use

Tel:781-999-4286 E\_mail:info@targetmol.com Address:34 Washington Street,Wellesley Hills,MA 02481