

BW 942C

## Chemical Properties

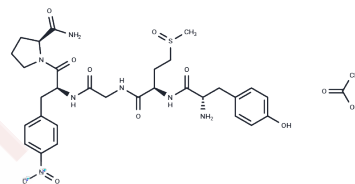
CAS No. : 98311-64-9

Formula: C32H43N7O11S

Molecular Weight: 733.79

Storage: Powder: -20°C for 3 years | In solvent: -80°C for 1 year

Actual storage temperature shall be subject to the COA.



## Biological Description

Description	BW 942C is a pentapeptide that is enkephalin-like.
Targets(IC50)	Others

## Preparing Stock Solutions

	1mg	5mg	10mg
1 mM	1.3628 mL	6.8139 mL	13.6279 mL
5 mM	0.2726 mL	1.3628 mL	2.7256 mL
10 mM	0.1363 mL	0.6814 mL	1.3628 mL
50 mM	0.0273 mL	0.1363 mL	0.2726 mL

Please select the appropriate solvent to prepare the stock solution, according to the solubility of the product in different solvents. Please use it as soon as possible.

Note: The dilution table applies only to solid products. For liquid products, please calculate the stock solution based on the stated concentration and/or density.

## Reference

Boucher BA, Foster TS, Phillips BA, Fleck RJ, Kirksey DF, Cato AE. The acute effects of the enkephalin analogue BW 942C in humans. *J Clin Pharmacol.* 1987 Feb;27(2):151-4. PubMed PMID: 3119677.

Berschneider HM, Martens H, Powell DW. Effect of BW 942C, an enkephalinlike pentapeptide, on sodium and chloride transport in the rabbit ileum. *Gastroenterology.* 1988 Jan;94(1):127-36. PubMed PMID: 2446944.

James MK, Leighton HJ. Naloxazone treatment in the guinea pig ileum in vitro reveals second functional opioid receptor site. *J Pharmacol Exp Ther.* 1987 Jan;240(1):138-44. PubMed PMID: 3027301.

Kumor K, Su TP, Vaupel B, Haertzen C, Johnson RE, Goldberg S. Studies of kappa agonist. *NIDA Res Monogr.* 1986; 67:18-25. PubMed PMID: 3018572.

**Inhibitor · Natural Compounds · Compound Libraries · Recombinant Proteins**

This product is for Research Use Only · Not for Human or Veterinary or Therapeutic Use

Tel:781-999-4286 E\_mail:info@targetmol.com Address:34 Washington Street,Wellesley Hills,MA 02481